

## Stratford-on-Avon District Council

## Ecological and Geological Study of Local Service Villages

## Settlement Assessment: Moreton Morell

## Designated sites:

Status and Name	Area in hectares	Grid ref.	Description
<b>LWS deferred</b>			
SP35C4 Wild Garden Wood	4.51	SP3055	Woodland & scrub

## Key Target Notes

- SP35c1 – Grounds of Moreton Hall (Warwickshire College of Agriculture)
- SP35c2 – Ash plantation in the grounds of Moreton Hall
- SP35c17 – Tree lined Wellingtonia driveway to Moreton Hall

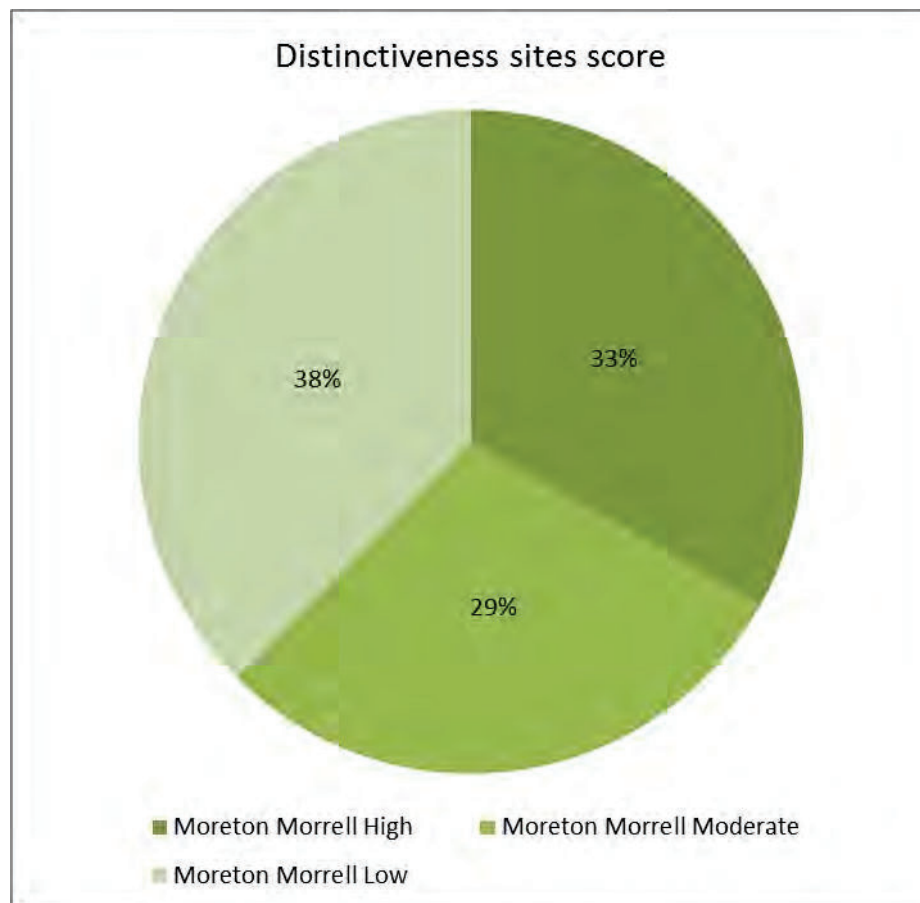
## Habitat Description

There is a mixture of high, medium and low distinctive habitats associated with the grounds of Moreton Hall - Warwickshire College of Agriculture. Throughout the grounds of the college is a mix of semi-natural woodland and plantation; poor-semi improved and amenity grasslands and ponds.

The remaining habitats are predominantly arable and improved grassland with linear trees, hedgerows with trees and linear scrub throughout.

Distinctiveness Phase 1 habitats	No. of sites	Area in hectares	Score
<b>High</b>			
A111 Broad-leaved semi-natural woodland	4	0.54	12
A5 Orchard	1	0.80	3
B22 Semi-improved neutral grassland	7	7.01	21
F1 Swamp	1	0.01	3
G1 Standing water	9	0.94	27
G2 Running water	6	0.12	18
<b>Sub Total</b>	<b>28</b>	<b>9.42</b>	<b>84</b>
<b>Moderate</b>			
A112 Broad-leaved plantation	20	7.98	40
A21 Dense/continuous scrub	8	1.59	16
A22 Scattered scrub	1	0.57	3
B6 Semi-improved neutral grassland	4	17.87	8
J112 Allotments	3	1.13	6
J113 Set-aside	1	1.59	1

<b>Sub Total</b>	<b>37</b>	<b>30.72</b>	<b>74</b>
<b>Low</b>			
A122 Coniferous plantation	4	1.77	4
A132 Mixed plantation	4	3.60	4
B4 Improved grassland	42	99.98	42
C31 Tall ruderal	7	0.86	14
J11 Arable	20	88.20	20
J12 Amenity grassland	18	11.75	36
<b>Sub Total</b>	<b>95</b>	<b>206.17</b>	<b>120</b>
<b>Totals</b>	<b>160</b>	<b>246.31</b>	<b>278</b>



### **Geological Description**

Moreton Morrell has potential for its late Triassic – early Jurassic geology, spanning the Penarth Group and basal Lias Group. Any excavations into natural geology would be of potential interest for purposes of recording and/or museum collecting.

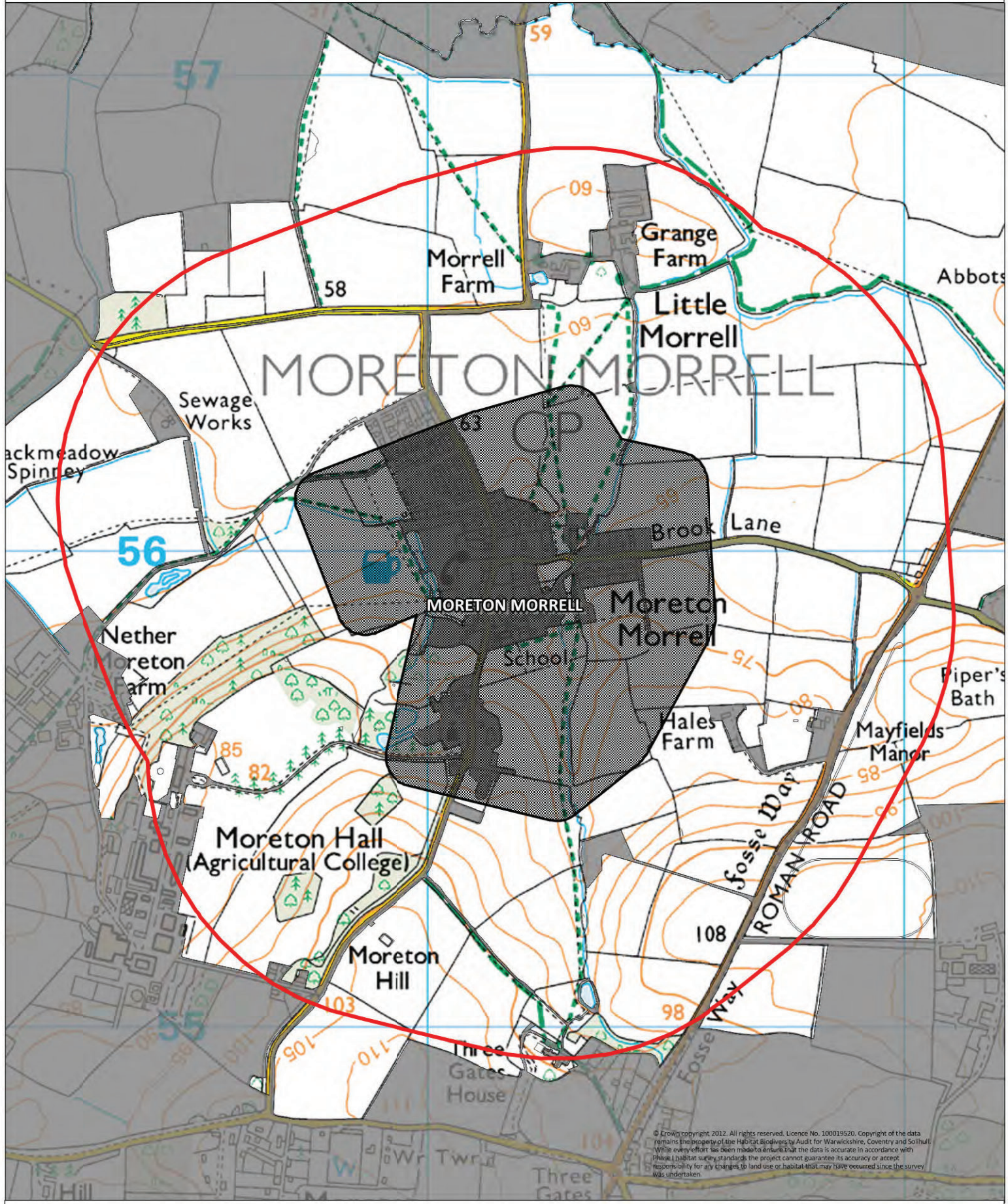
### **Protected Species**

Hedgehog, black poplar and brown hare plus the bat species of common and soprano pipistrelle, brown long-eared, noctule, natterers, barbastelle and an indeterminable bat species plus the rare plants of dwarf elder have been recorded in the settlement area. In

the wider area there are additional records of grass snake, great crested newt, badger, butterfly species of small heath, wall, grizzled skipper and additional bat records of myotis sp.. There are also rare plants including water-soldier, round-leaved cranesbill, yellow bird's-nest, greater butterfly orchid, mousetail, horseshoe vetch, slender tare, green figwort, rye brome, small-flowered buttercup, wild clary helleborine, stinking hellebore, cornfield knotgrass, green figwort and lesser centaury small-leaved sweet-briar, corn gromwell, violet recorded in the wider area

### **Recommendations for Further Survey**

None



© Crown copyright 2012. All rights reserved. Licence No. 100019520. Copyright of the data remains the property of the Habitat Biodiversity Audit for Warwickshire, Coventry and Solihull. While every effort has been made to ensure that the data is accurate in accordance with the habitat survey standards, the project cannot guarantee its accuracy or accept responsibility for any changes to land use or habitat that may have occurred since the survey was undertaken.

**2.8 SQKM**

Settlements

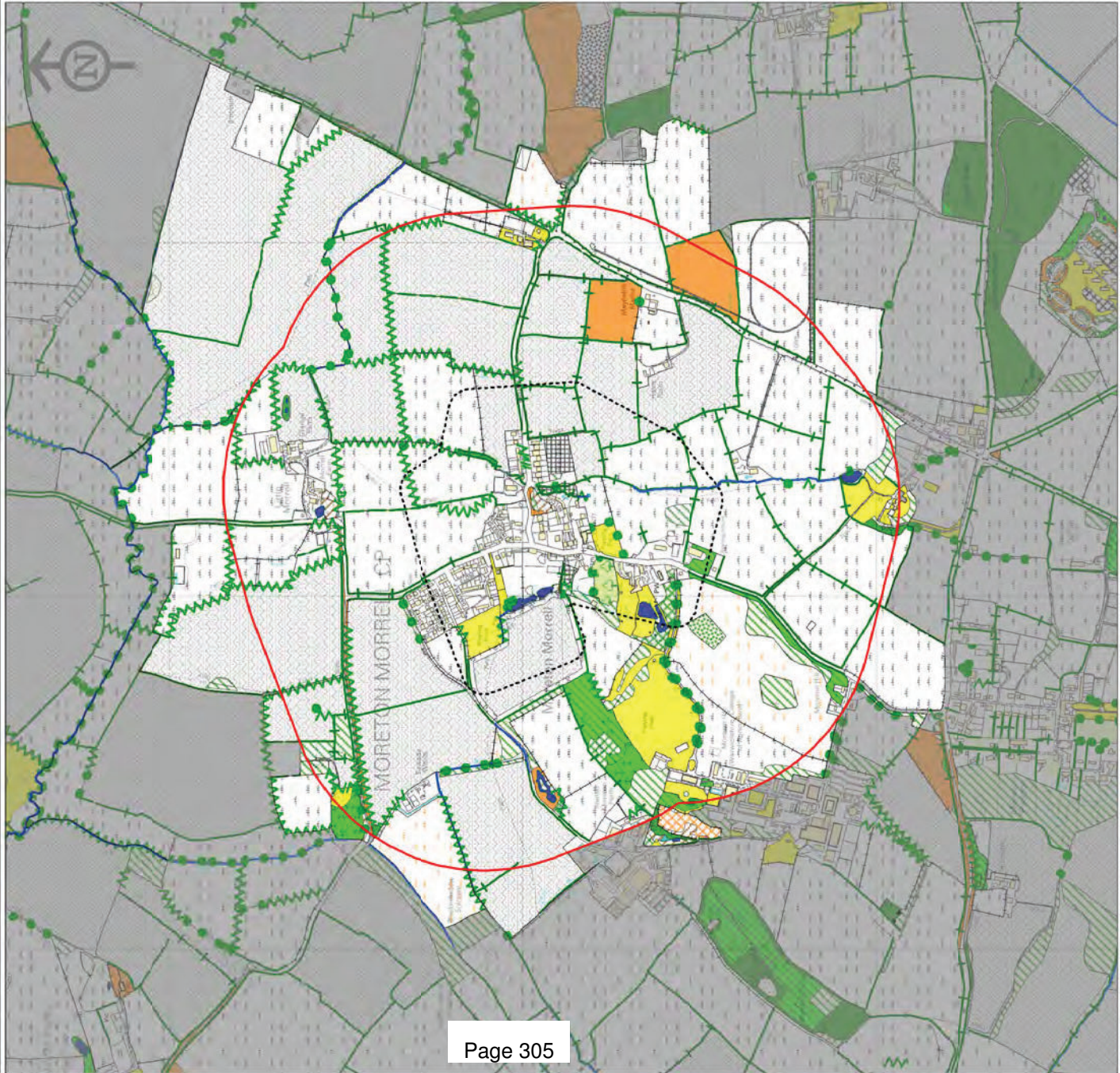


Settlements

500m Buffer



500m Buffer



PHASE 1 HABITAT SURVEY

- Habitat Types
- |  |   |  |                                      |
|--|---|--|--------------------------------------|
|  | A111 (Broad-leaved semi-natural woodland)   |  | C32 (Non-ruderal)                    |
|  | A112 (Broad-leaved plantation)              |  | D5 (Dry heath/acid grassland mosaic) |
|  | A121 (Coniferous semi-natural woodland)     |  | E11 (Sphagnum Bog)                   |
|  | A122 (Coniferous plantation)                |  | E21 (Acid/neutral flush)             |
|  | A131 (Mixed semi-natural woodland)          |  | E31 (Valley mire)                    |
|  | A132 (Mixed plantation)                     |  | E32 (Basin mire)                     |
|  | A21 (Dense/continuous scrub)                |  | F1 (Swamp)                           |
|  | A22 (Scattered scrub)                       |  | F22 (Inundation vegetation)          |
|  | A31 (Broad-leaved parkland/scattered trees) |  | G1 (Standing water)                  |
|  | A32 (Coniferous parkland/scattered trees)   |  | G2 (Running water)                   |
|  | A4 (Recently felled woodland)               |  | I21 (Quarry)                         |
|  | A5 (Orchard)                                |  | I22 (Spoil)                          |
|  | B11 (Unimproved acidic grassland)           |  | I23 (Mire)                           |
|  | B12 (Semi-improved acidic grassland)        |  | I24 (Refuse tip)                     |
|  | B21 (Unimproved neutral grassland)          |  | J11 (Arable)                         |
|  | B22 (Semi-improved neutral grassland)       |  | J112 (Allotments)                    |
|  | B31 (Unimproved calcareous grassland)       |  | J113 (Set-aside)                     |
|  | B32 (Semi-improved calcareous grassland)    |  | J12 (Amenity grassland)              |
|  | B4 (Improved grassland)                     |  | J13 (Ephemeral/short perennial)      |
|  | B5 (Marsh/marshy grassland)                 |  | J14 (Introduced shrub)               |
|  | B6 (Poor semi-improved grassland)           |  | J36 (Buildings)                      |
|  | C11 (Continuous bracken)                    |  | J4 (Bare ground)                     |
|  | C31 (Tall ruderal)                          |  |                                      |

- Linear Features
- |  |   |  |   |
|--|---|--|---|
|  | A21 (Linear Scrub)                      |  | J23 (Hedge with Trees)                      |
|  | A3 (Linear Trees)                       |  | J231 (Native Species Rich Hedge with Trees) |
|  | G1 (Standing Water)                     |  | J24 (Fence)                                 |
|  | G2 (Running Water)                      |  | J25 (Wall)                                  |
|  | I1 (Inland Cliff)                       |  | J26 (Dry Ditch)                             |
|  | J21 (Intact Hedge)                      |  | J27 (Boundary Removed)                      |
|  | J211 (Native Species Rich Intact Hedge) |  | J28 (Earth Bank)                            |
|  | J22 (Defunct Hedge)                     |  |   |

- STUDY AREA
- |  |             |
|--|-------------|
|  | 500m buffer |
|  | Settlements |
- OS DEVELOPED LAND USE AREA

© Crown copyright, 2012. All rights reserved. Licence No. 1000192020. Copyright of the data remains the property of the Habitat Biodiversity Audit for Warwickshire, Coventry and Solihull. While every effort has been made to ensure that the data is accurate in accordance with Phase 1 habitat survey standards the project cannot guarantee its accuracy or accept any liability for any changes to land use or habitat that may have occurred since the survey was undertaken.



# Stratford-on-Avon District Council Ecological Villages Study

## Target Notes

### Moreton Morrell

sp35c1	Pond containing frequent white water-lily; yellow iris; great willowherb; Juncus effusus; water mint with some surrounding willow. UPDATED 07/06/2011 Moreton Morell Students. As described, with reed mace.
sp35c13	Dry artificial pond with a concrete base. The area is surrounded by primrose with nettle; bramble; bluebell; some lesser knapweed; wood avens and early dog violet. Dense scrub occurs to the north and include some extensive areas of dog's mercury. UPDATED 07/06/2011 Moreton Morell Students. Invasive ivy covering ground flora and many tree trunks. Area was once part of an ornamental garden.
SP35C14	New broadleaved plantation with ash, sycamore, willow and aspen.
SP35C15	No longer a plantation. Now tall ruderal - nettles, dock, hawthorn. Some re-planting with holly. Remnants of old plantation present. Southern area used to store horse jump materials.
SP35C16	Veteran oak tree.
SP35C17	Linear Wellingtonia trees.
SP35C18	Slope below formal terrace containing a mixed plantation. Acer species, ash, pine, rowan, dogwood and dog rose.
SP35C19	Pine infected with pine weevil resulting in curved trunks.
sp35c2	Ash plantation with an understorey of elder and young ash bordering a pine plantation. Ground flora includes nettle; herb robert; bramble; ivy; bluebell; primrose; dog violet; common hemp-nettle; burdock; dog rose; wood avens and dog's mercury. UPDATED 07/06/2011 Moreton Morell Students. Much of elder cut down and left as dead hedges.
SP35C20	Old summer house has been bricked up and may have a bat roost. Invasive exotic ivy present.
SP35C21	Broadleaved plantation with ash, silver birch, cherry, alder, hazel and field maple. Trees either side of equine cross country course.
SP35C22	10-15m set aside border used as an equine cross country course.
SP35C23	Grass track next to broadleaved plantation used for equine cross country.
SP35C24	Pond dried up apart from small area with yellow flag, Phragmites and hard rush.
SP35C25	Mixed plantation some age. Large examples of lime, horse chestnut, silver birch, pine, ash, sycamore and oak behind hawthorn hedge.
SP35C27	Approximately a dozen fruit trees in orchard with long grass underneath. Not an intensive orchard and some trees are quite large. Reptile potential.
SP35C28	Mature willow trees bordering dry water channel. Dense nettle and some redcurrant. Area borders allotments.
SP35C29	Scattered scrub with large mature sycamore trees along dry channel.
SP35C30	Old fallen tree left in field.
SP35C31	Overgrown, rutted farm track with mature hedges on both sides containing hawthorn, field maple, holly, ash, sycamore, blackthorn, cleavers, woundwort and thistle.



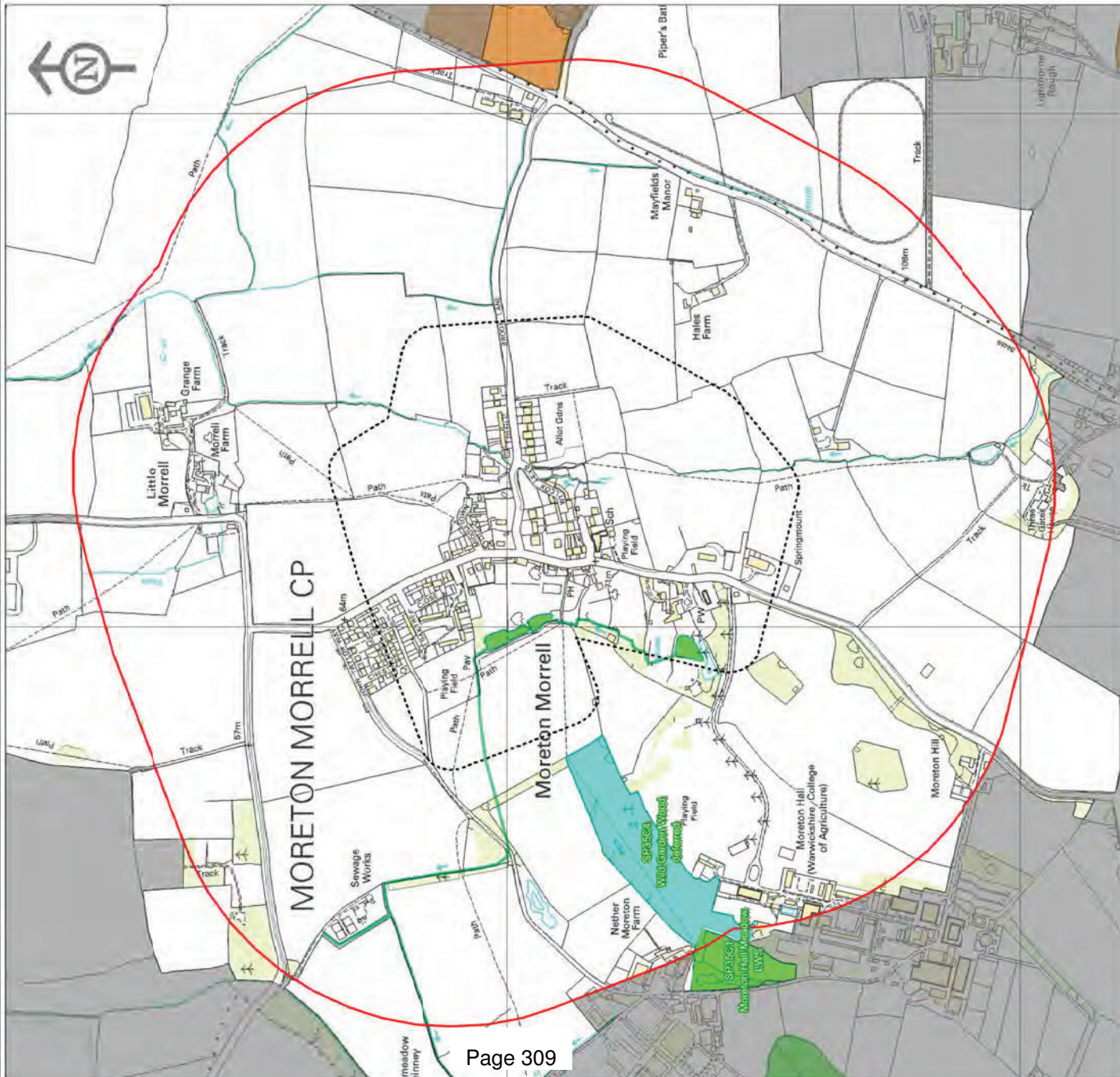
## Target Notes

sp35c8	Although amenity grassland contains locally abundant lesser celandine and patches of primrose; daisy; creeping buttercup; selfheal and sorrel. The field layer is dominated by <i>Rhytidadelphus squarrosus</i> .
sp35d4	Roadside verge - generally overgrown but contains hemp agrimony and meadow cranesbill. UPDATED 14/05/2012 MF. Dominant grasses, meadow foxtail and red fescue. Verge dominated by tall ruderal species. Cleavers, common nettle, hogweed, cow parsley, with additional species of silver weed, ribwort plantain, creeping buttercup. Species previously recorded not found at time of survey.
sp35d7	Road verge containing abundant <i>Arrhenatherum elatius</i> and <i>Dactylis glomerata</i> with hedge woundwort; meadow vetchling; great willowherb; woody nightshade and hemp agrimony. UPDATED 14/05/2012 MF. Species previously recorded. Verge has been disturbed after emergence of wet ditch. Verge dominated by red fescue, cow parsley, cleavers, burdock, hogweed, dock and common nettle.
sp35d8	Area of tall; neglected; species poor grassland with single species plantation blocks (field maple; ash and willow). UPDATED 14/05/2012 MF. Unable to access. Viewed from roadside is now a mature plantation.



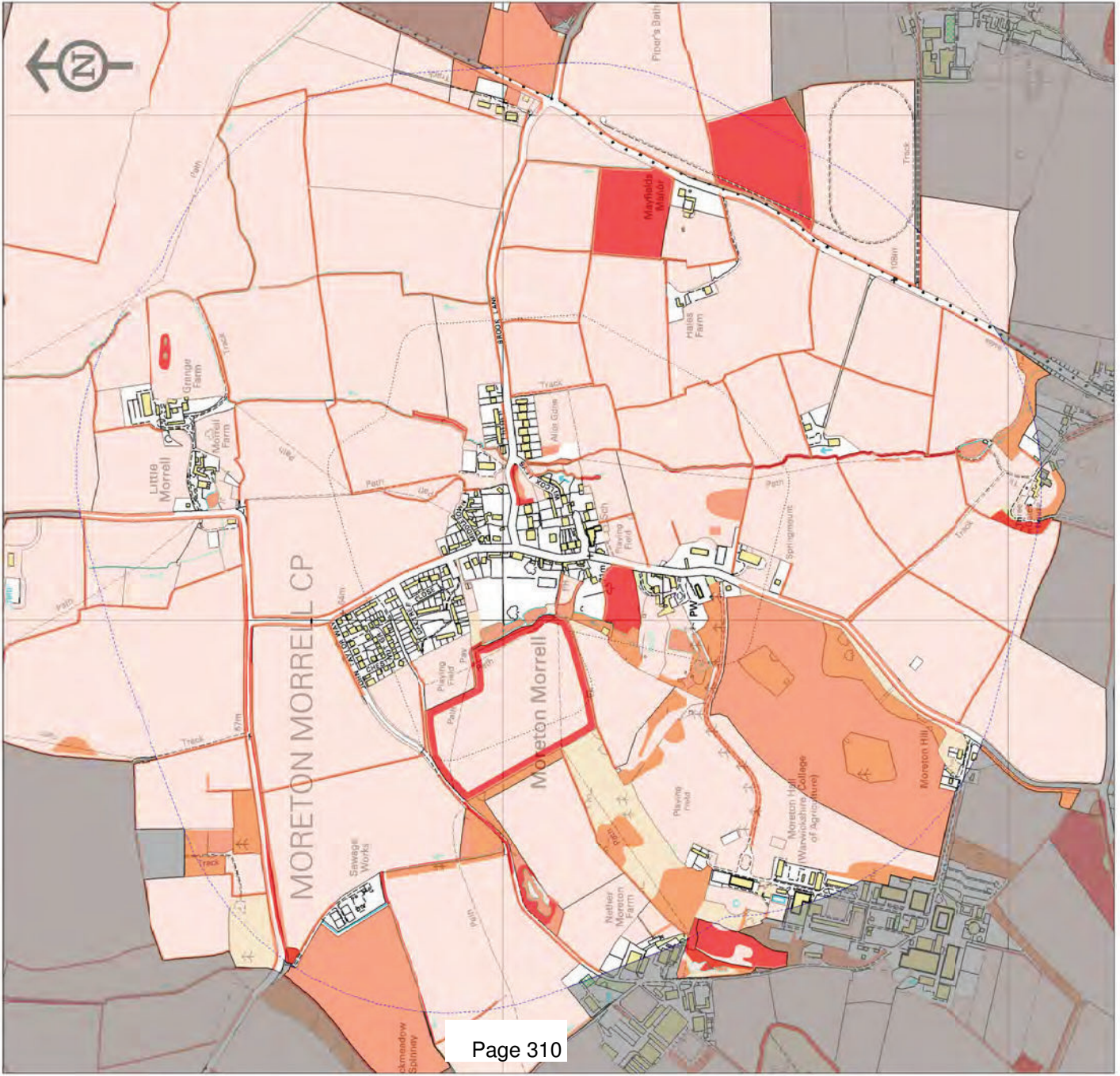


# MORETON MORRELL



© Crown copyright, 2012. All rights reserved. Licence No. 100019220. Copyright of the data remains the property of the Habitat Biodiversity Audit for Warwickshire, Coventry and Solihull. While every effort has been made to ensure that the data is accurate in accordance with Practice Habitat survey standards the project cannot guarantee its accuracy or accept any changes to land use or habitat that may have occurred since the survey was undertaken.

# MORETON MORRELL



**Settlement Distinctiveness**

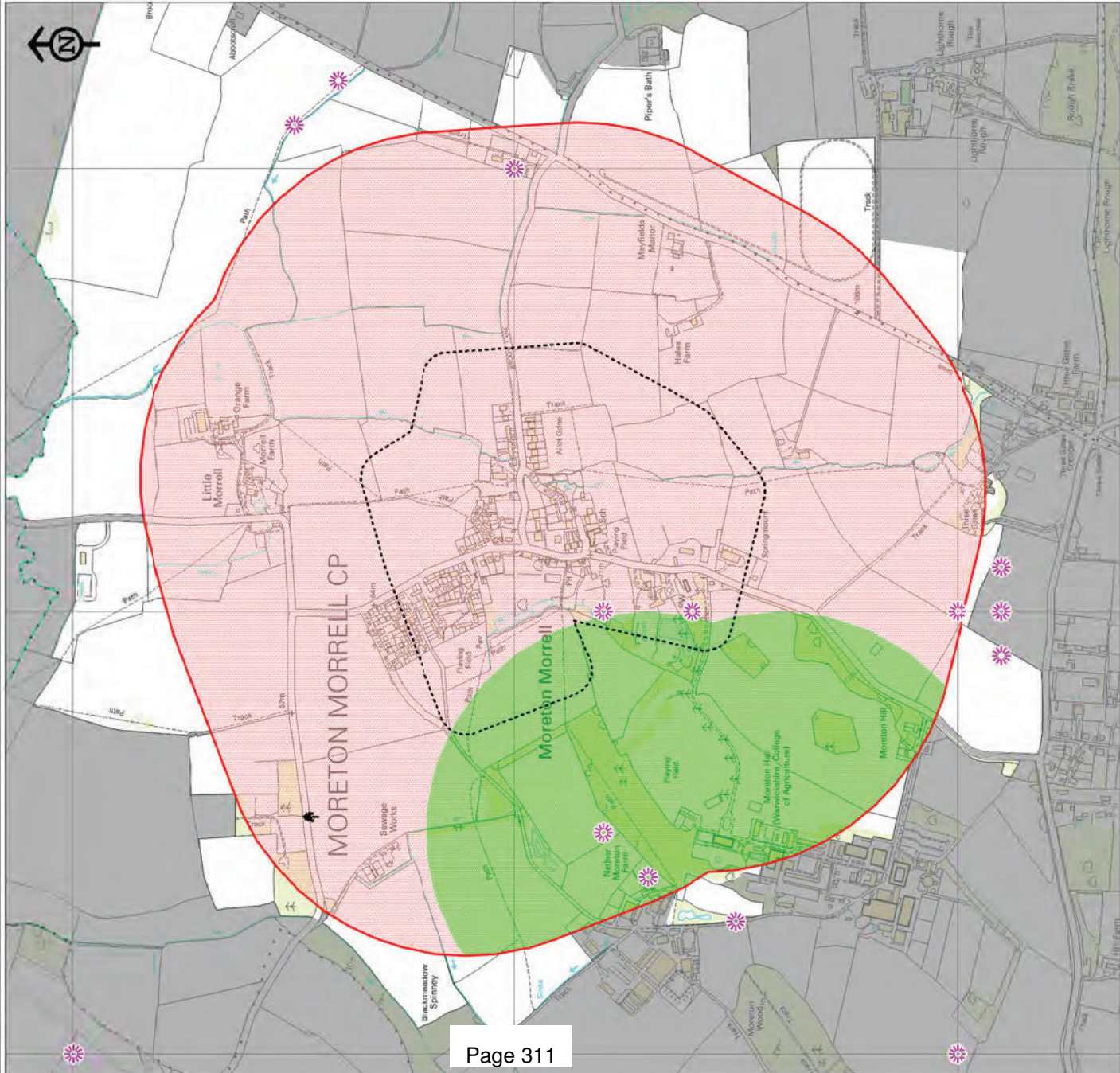
- 3: HIGH
- 2: MODERATE
- 1: LOW

**STUDY AREA**  
 500m buffer

**OS DEVELOPED LAND USE AREA**  
 Settlements

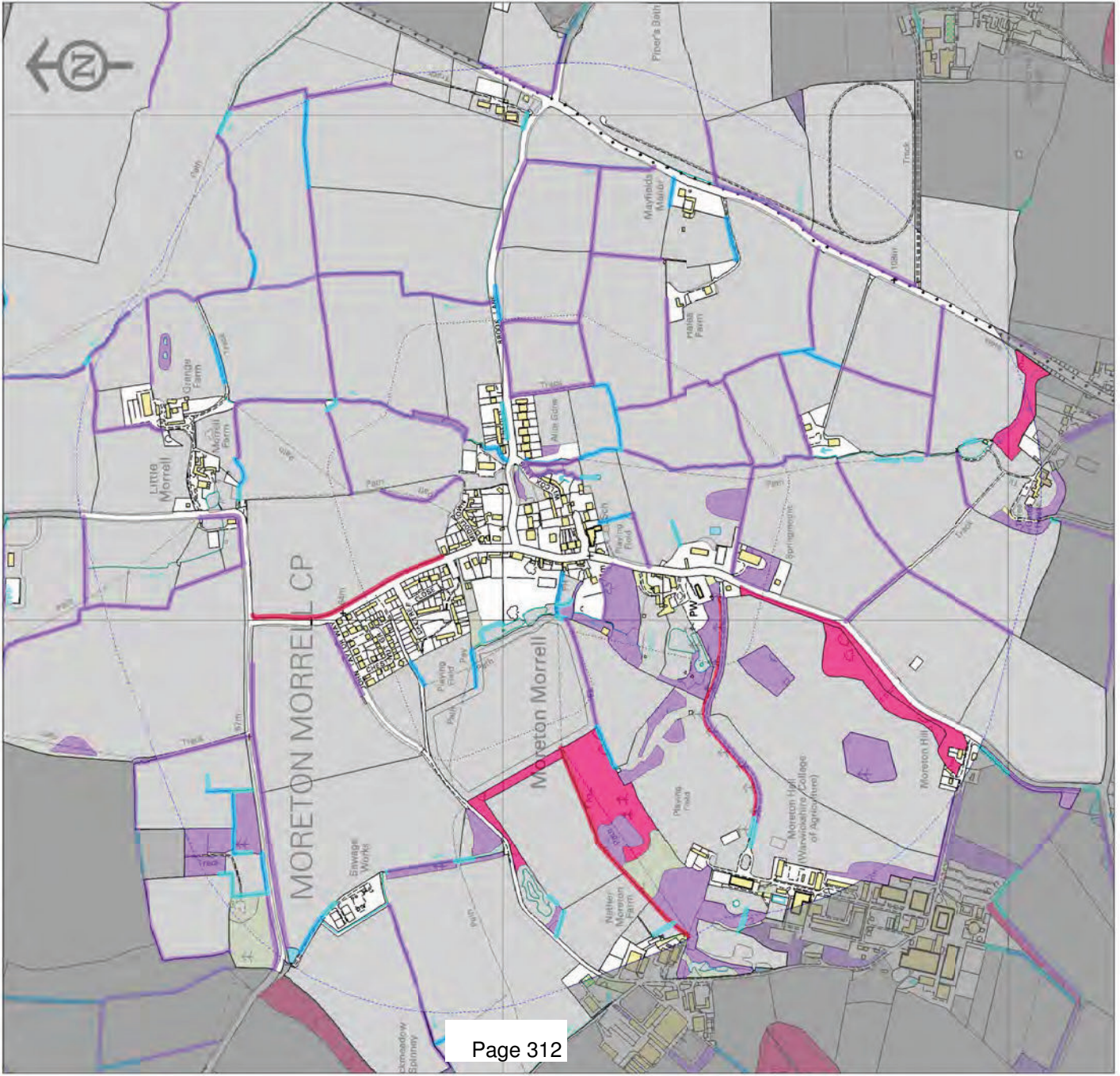
© Crown copyright, 2012. All rights reserved. Licence No. 100019520. Copyright of the data remains the property of the Habitat Biodiversity Audit for Warwickshire, Coventry and Solihull. While every effort has been made to ensure that the data is accurate in accordance with PINS habitat survey standards the project cannot guarantee its accuracy or accept any liability for any changes to land use or habitat that may have occurred since the survey was undertaken.

# MORETON MORRELL



Warwickshire Biological Records Centre

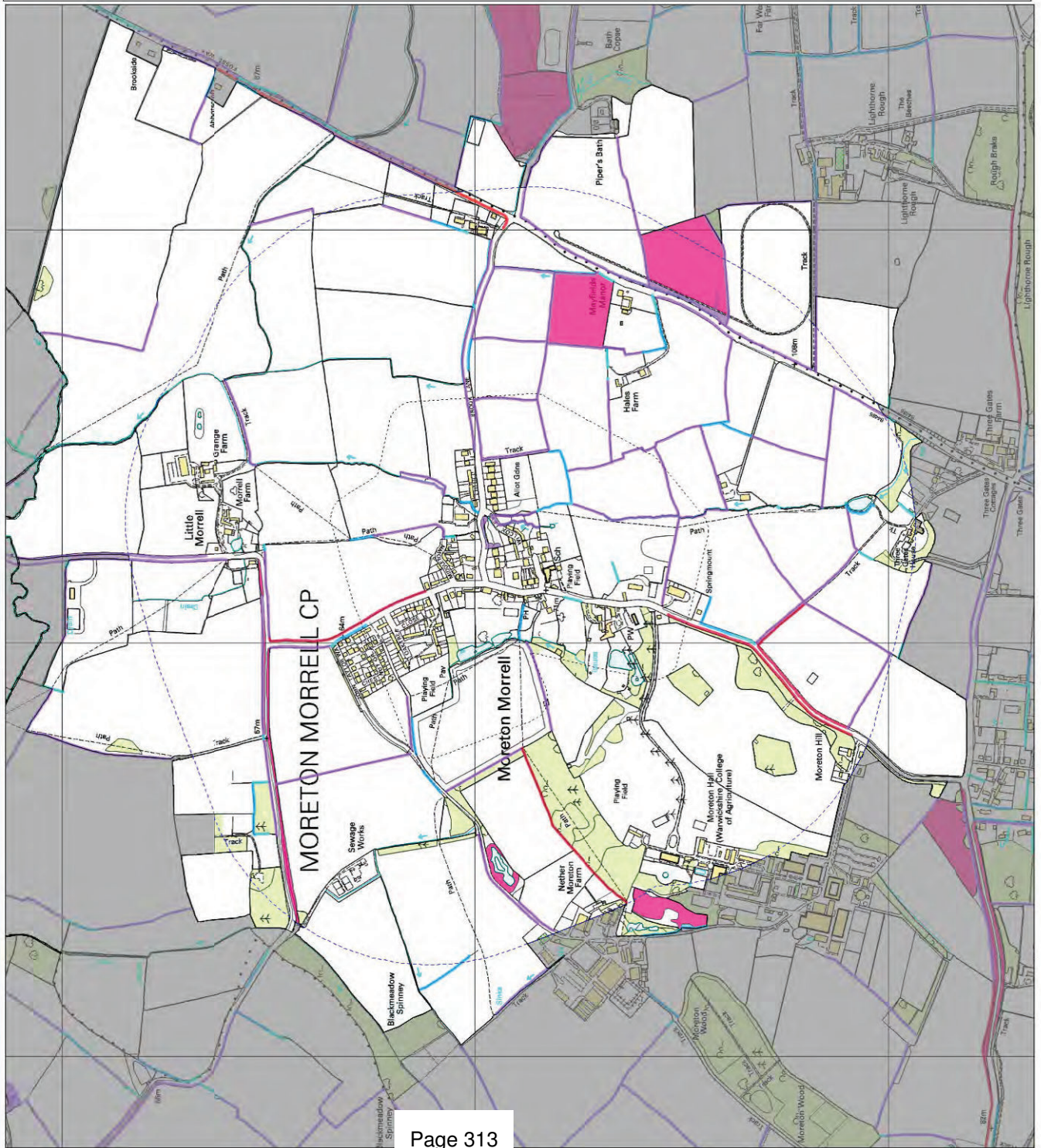
# MORETON MORRELL



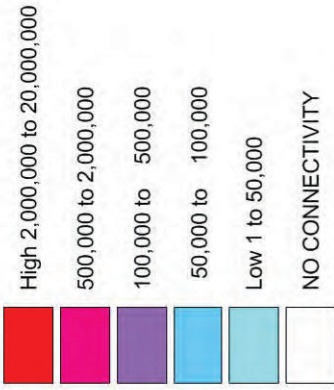
© Crown copyright, 2012. All rights reserved. Licence No. 100019220. Copyright of the data remains the property of the Habitat Biodiversity Audit for Warwickshire, Coventry and Solihull. While every effort has been made to ensure that the data is accurate in accordance with PINS2 habitat survey standards the project cannot guarantee its accuracy or accept any changes to land use or habitat that may have occurred since the survey was undertaken.



# MORETON MORRELL



## Grassland 1km Connectivity



## Stratford-on-Avon District Council

## Ecological and Geological Study of Local Service Villages

## Settlement Assessment: Napton-on-the-Hill

## Designated sites:

Status and Name	Area in hectares	Grid ref.	Description
<b>SSSI</b>			
Napton Hill Quarry	0.35	SP4561	Geological
<b>Local Geological Site</b>			
Napton Hill Sandstone Doggers	n/a	SP4561	very large sandstone nodules
<b>LWS</b>			
SP46K2 Napton Hill and Quarry	17.65	SP4561	Post- industrial site
<b>potential sites</b>			
SP46R4 Coventry Bridge Meadow	3.23	SP4666	Semi-natural grasslands & marsh
SP45U4 Headlands Farm Ditch	0.10	SP4635	Species sites
SP45P1 Field	8.61	SP4596	Semi-natural grasslands & marsh
SP18Li2g Grand Union Canal	127.07	SP2576	Water courses & water bodies

## Key Target Notes

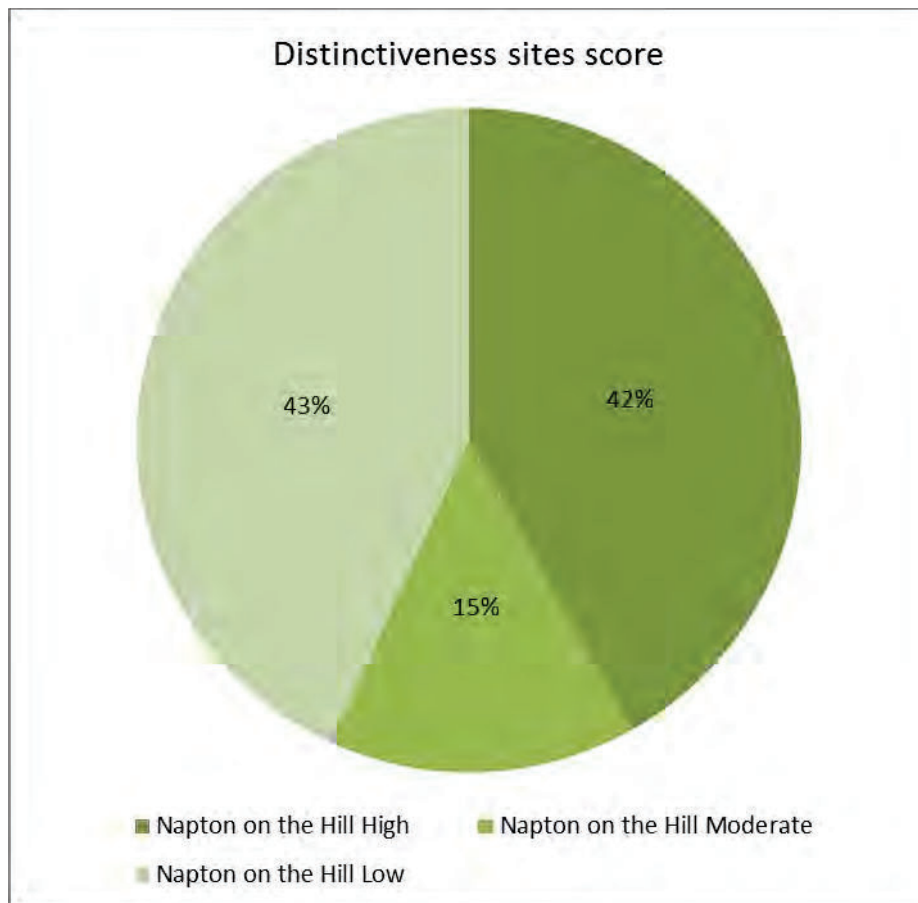
- SP45u4 - Ponds
- SP46q13 - Fishing pool
- SP46q23 – Church Leys Farm
- SP46k10 – Waterlogged ground alongside stream

## Habitat Descriptions

Habitats associated with water are the most distinctive habitats. These include a number of ponds and fishing pools and the Grand Union Canal. Around the pools and canal is the habitats classified as emergent vegetation including marshy grassland and wet woodland.

There are also the mixed habitats associated with the former quarries classified as post-industrial sites of which Napton Hill Quarry SSSI and Napton Hill and Quarry LWS are important examples.

<b>Distinctiveness Phase 1 habitats</b>	<b>No. of sites</b>	<b>Area in hectares</b>	<b>Score</b>
<b>High</b>			
A111 Broad-leaved semi-natural woodland	3	0.74	9
A5 Orchard	1	0.07	3
B22 Semi-improved neutral grassland	1	2.22	3
F1 Swamp	5	0.30	15
G1 Standing water	23	8.17	69
G2 Running water	21	0.59	63
<b>Sub Total</b>	<b>54</b>	<b>12.08</b>	<b>162</b>
<b>Moderate</b>			
A112 Broad-leaved plantation	12	2.86	24
A21 Dense/continuous scrub	6	1.22	12
A22 Scattered scrub	3	0.88	9
B6 Semi-improved neutral grassland	7	10.38	14
J112 Allotments	1	0.27	2
<b>Sub Total</b>	<b>29</b>	<b>15.61</b>	<b>61</b>
<b>Low</b>			
A132 Mixed plantation	4	1.21	4
B4 Improved grassland	128	265.60	128
C31 Tall ruderal	6	0.83	12
J11 Arable	5	39.93	5
J12 Amenity grassland	22	10.32	44
J13 Ephemeral/short perennial	1	0.14	2
J14 Introduced shrub	1	1.65	1
<b>Sub Total</b>	<b>167</b>	<b>319.68</b>	<b>196</b>
<b>Totals</b>	<b>250</b>	<b>347.37</b>	<b>419</b>



### Geological Description

- Napton Hill Sandstone Doggers

Napton on the Hill has considerable potential for its early Jurassic geology (principally the Charmouth Mudstone and Dyrham formations), with potential for palaeontological finds. Any excavations into natural geology would be of potential interest for purposes of recording and/or museum collecting.

### Protected Species

Grass snake, great crested newt and the bat species of common/soprano pipistrelles and indeterminate species plus butterfly species of wall and small heath have been recorded in the settlement area. The rare plants of various-leaved water starwort and a veteran sycamore have also been recorded in the settlement boundary. In the wider area there are records of brown hare, white-clawed crayfish, badger, otter, water vole, smooth newt, hedgehog, butterfly species of white letter hairstreak and grizzled skipper plus bat species of brown long-eared and whiskered/brandts. There are also rare plants including round-fruited rush, narrow-leaved water plantain, strawberry clover, distant sedge, sea club-rush, slender spike-rush, shepherd's-needle, flat-stalked pondweed, corn buttercup, bladder sedge, intermediate water starwort, opposite-leaved pondweed, dwarf spurge, green-winged orchid and dropwort recorded in the wider area

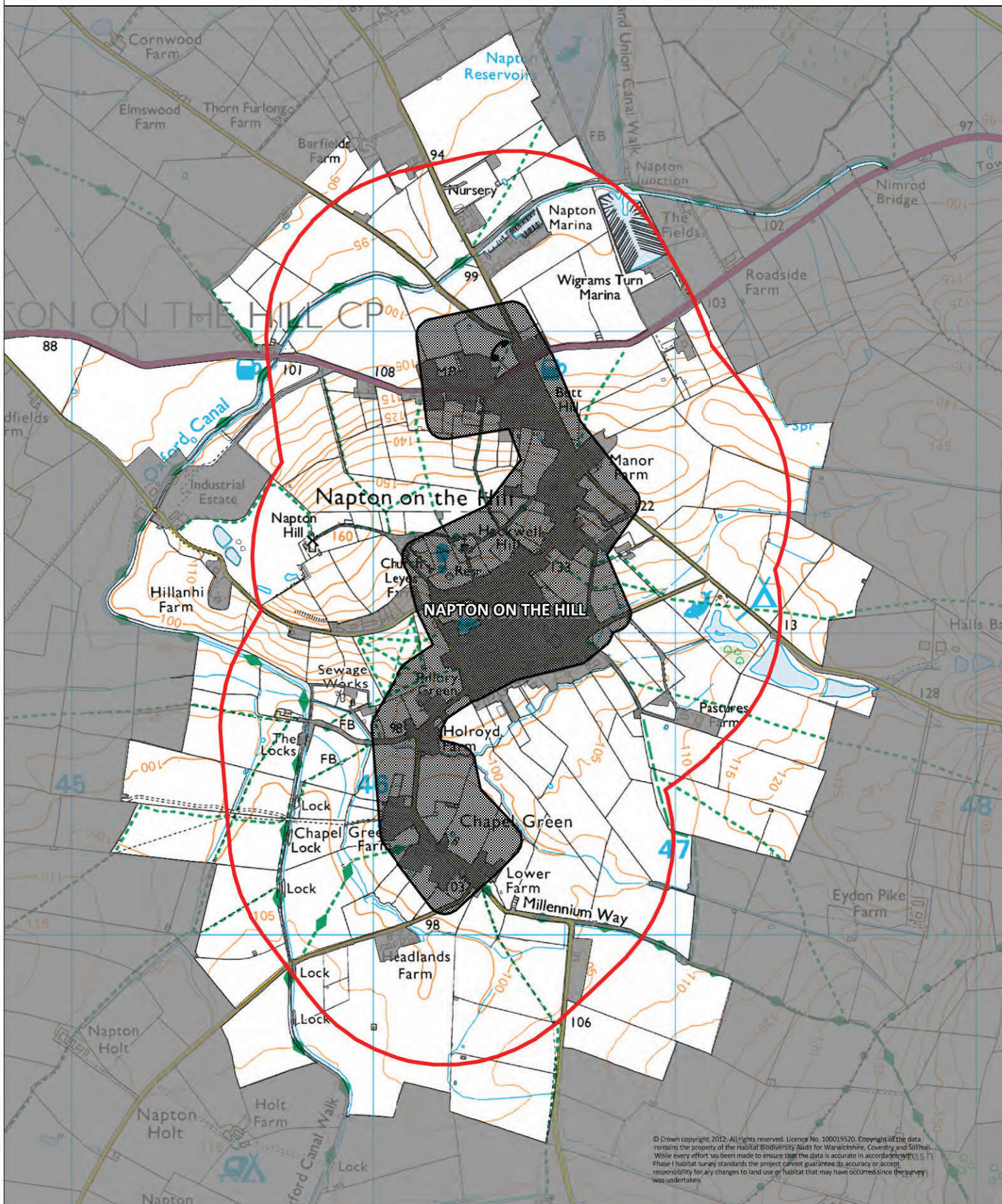
### Recommendations for Further Survey

- Grand Union Canal





# NAPTON ON THE HILL



© Crown copyright 2012. All rights reserved. Licence No. 100019520. Copyright of the data remains the property of the Habitat Biodiversity Audit for Warwickshire, Coventry and Solihull. While every effort has been made to ensure that the data is accurate in accordance with the current Phase 1 habitat survey standards the project cannot guarantee its accuracy or accept responsibility for any changes to land use or habitat that may have occurred since the survey was undertaken.

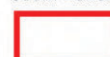
4.3 SQKM

Settlements



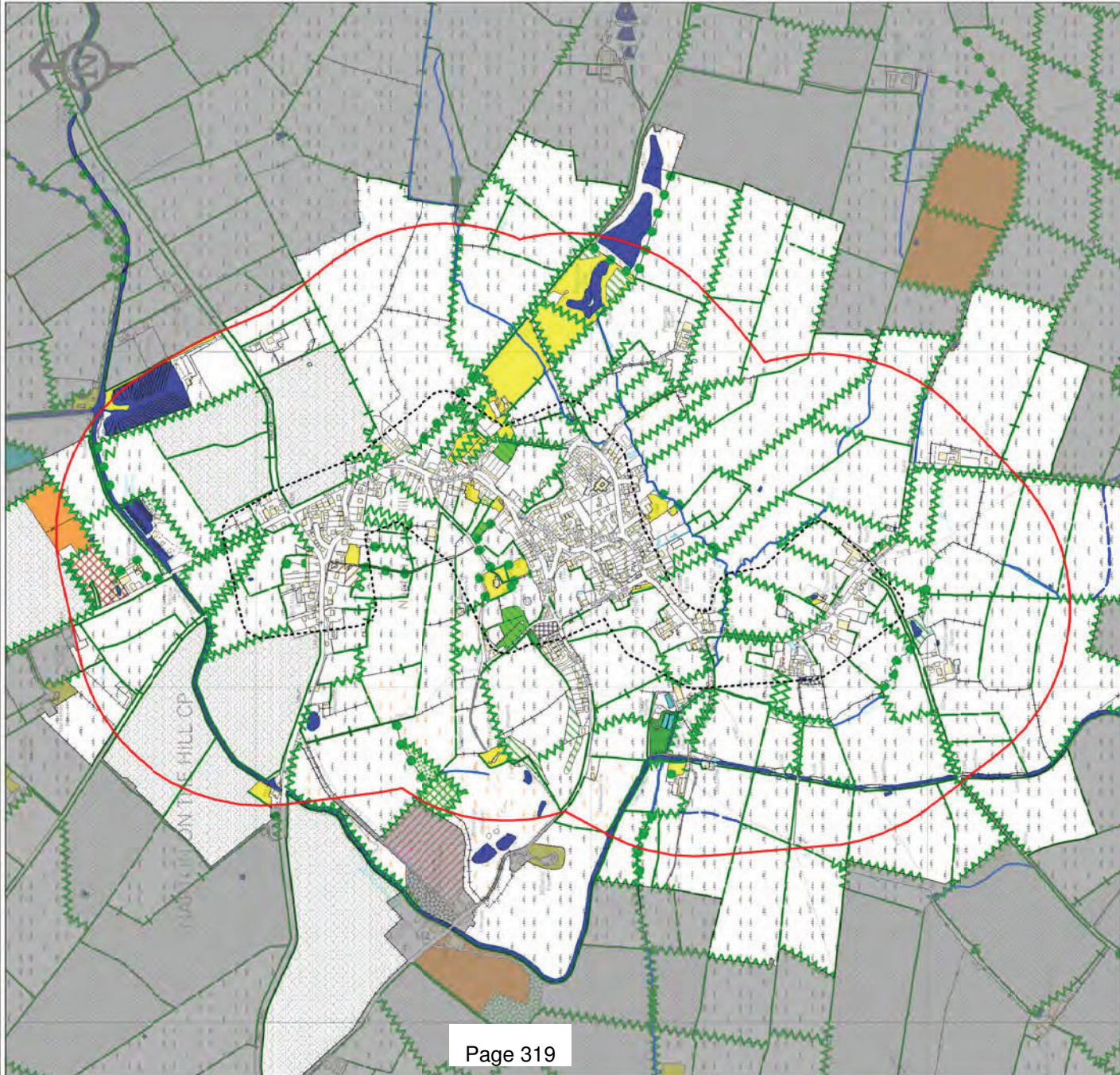
Settlements

500m Buffer



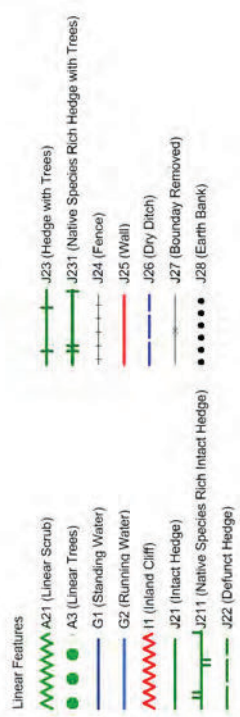
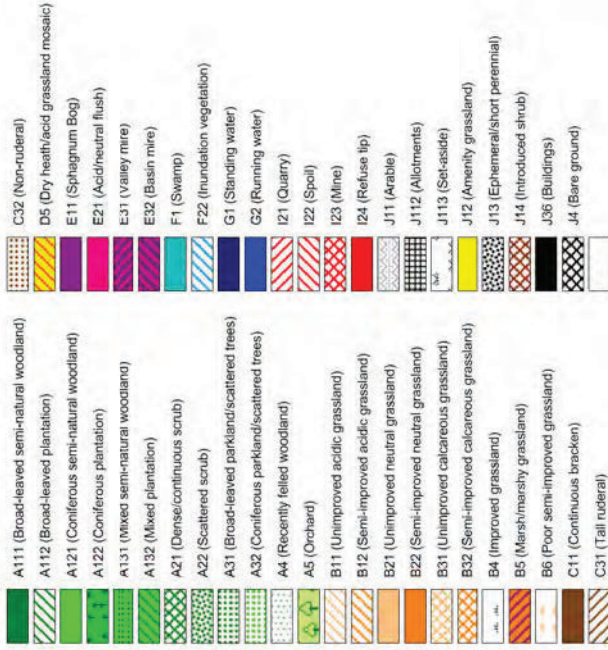
500m Buffer

# NAPTON ON THE HILL



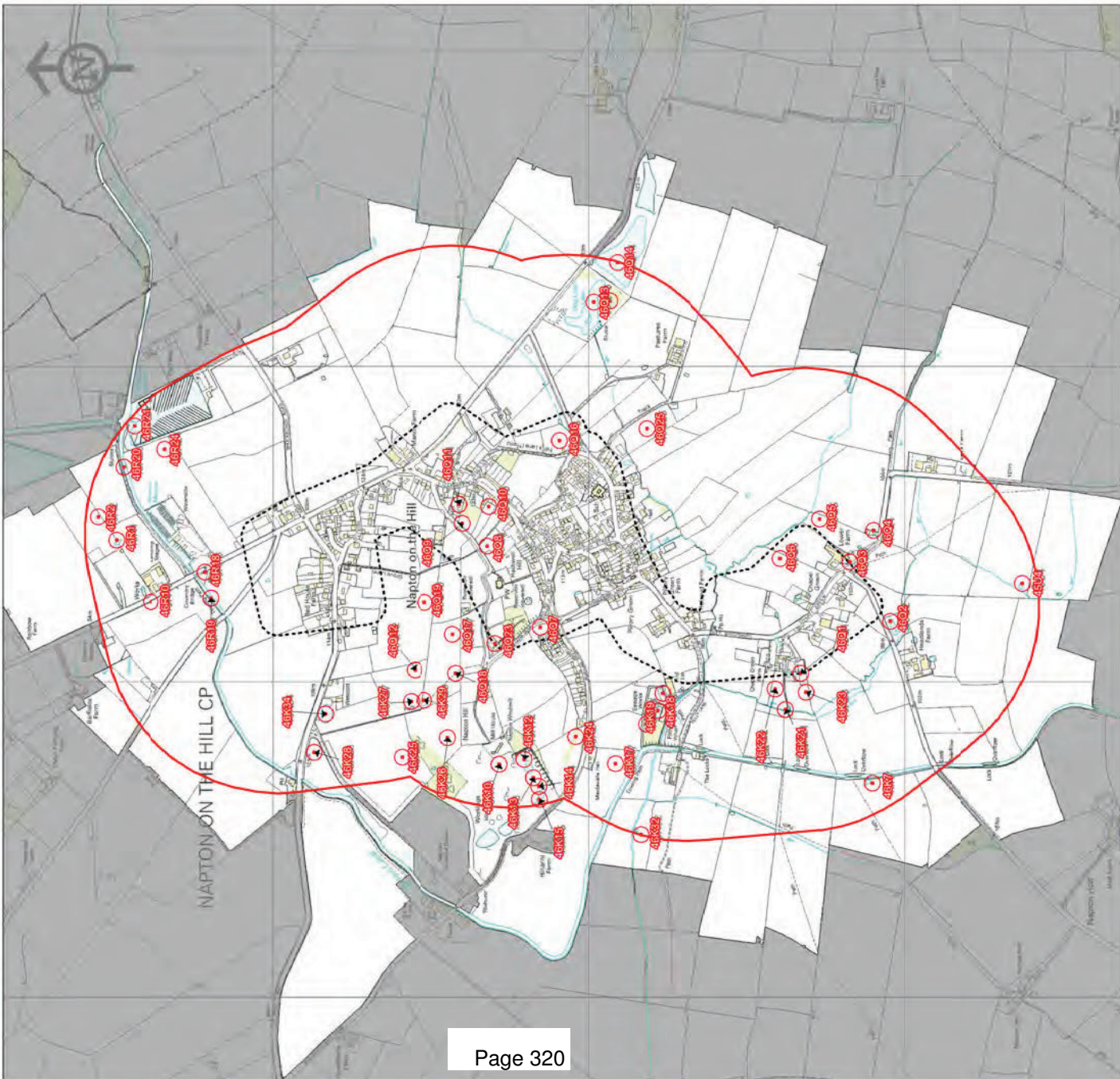
## PHASE 1 HABITAT SURVEY

Habitat Types



© Crown copyright, 2012. All rights reserved. Licence No. 1000192020. Copyright of the data remains the property of the Habitat Biodiversity Audit for Warwickshire, Coventry and Solihull. While every effort has been made to ensure that the data is accurate in accordance with Phase 1 habitat survey standards the project cannot guarantee its accuracy or accept any changes to land use or habitat that may have occurred since the survey was undertaken.

# NAPTON ON THE HILL



**TARGET NOTES**  
 Point

**OS DEVELOPED LAND USE AREA**  
 Settlements

**STUDY AREA**  
 500m buffer

© Crown copyright, 2012. All rights reserved. Licence No. 100019220. Copyright of the data remains the property of the Habitat Biodiversity Audit for Warwickshire, Coventry and Solihull. While every effort has been made to ensure that the data is accurate in accordance with PINS2 habitat survey standards the project cannot guarantee its accuracy or accept any changes to land use or habitat that may have occurred since the survey was undertaken.

## Napton on the Hill

sp45u4	Pond containing abundant <i>Lemna trisulca</i> with <i>Potamogeton natans</i> ; <i>Glyceria fluitans</i> and <i>Juncus inflexus</i> . Nearby ditch dominated by fool's watercress. Great crested newt found under corrugated iron sheeting. UPDATED 14/08/2011 DS. Pond almost completely dried up, as is adjacent ditch. No newts seen. UPDATED 21/04/2012 MF. Pond full of water at time of visit and appears to be deep with shallow sides. No newts seen, but probably good for newts and frogs. Deepest area is fenced off.
sp46k10	There is no open water here but the ground is waterlogged. There are alder; birch and willow trees growing over grass with patches of <i>Juncus effusus</i> and <i>Juncus inflexus</i> present. UPDATED 15/04/2012 MF. Remains as described. To the north of this nest there is a small stream. Appears to run south to north and through an area of dense scrub. The stream is wooded on either side with silver birch.
sp46k12	A large shallow pool with no submerged vegetation visible; but emergent <i>Typha latifolia</i> ; <i>Schoenoplectus lacustris</i> and common water plantain are present; with <i>Juncus acutiflorus</i> growing from the banks. There is scattered dense gorse scrub around the pool. UPDATED 15/04/2012 MF. Remains as described
sp46k13	A small pool set among exposed rocks; which is dominated by common water plantain with <i>Typha latifolia</i> also present. UPDATED 15/04/2012 MF. Remains as described
sp46k14	A small pool surrounded by dense scrub in which <i>Schoenoplectus lacustris</i> dominates with occasional common water plantain. UPDATED 15/04/2012 MF. Remains as described
sp46k15	A narrow pool set in semi improved grassland and adjacent to a young broad leaf plantation. The margins of the pool are dominated by <i>Typha angustifolia</i> ; with occasional <i>Schoenoplectus lacustris</i> and common water plantain. On the banks of the pool there is <i>Juncus effusus</i> ; <i>Juncus conglomeratus</i> and <i>Juncus inflexus</i> . There are birch and willow trees on the north bank; with scattered gorse scrub around. UPDATED 15/04/2012 MF. Remains as described
sp46k17	Poor semi improved grassland; with abundant <i>Cynosurus cristatus</i> and <i>Festuca rubra</i> ; with occasional <i>Alopecurus pratensis</i> ; <i>Phleum pratense</i> ; <i>Dactylis glomerata</i> ; <i>Holcus lanatus</i> and <i>Agrostis capillaris</i> . There is also locally abundant <i>Deschampsia cespitosa</i> and patches of <i>Juncus inflexus</i> in association with this. There were few forbs in this site; with nettles; creeping and spear thistle and common sorrel. UPDATED 08/06/2011 DS. No access, but has the appearance of improved grassland. UPDATED 15/04/2012 MF. No access. Viewed from canal side. Has characteristics of poor semi-improved grassland. Sheep grazed, sloped with many large anthills and scattered hawthorn scrub.
sp46k18	A reed bed for a sewage farm; completely dominated by <i>Phragmites australis</i> . UPDATED 15/04/2012 MF. Remains as described.
sp46k19	A reed bed for a sewage farm; completely dominated by <i>Phragmites australis</i> . UPDATED 15/04/2012 MF. Remains as described.
sp46k20	No access to this site and only a limited view from outside was possible; but this was sufficient to show that it was coarse grass with nettles and thistles. Some planting of trees seems to have been done at the west end; with young cherry and ash visible. UPDATED 15/04/2012 MF. UNABLE TO ACCESS. Viewed from canal side. Area now appears to be ash and hawthorn dominated woodland.
sp46k21	A small brook which is mostly overgrown with hawthorn scrub; but in places where space and light allows there is abundant <i>Phalaris arundinacea</i> . UPDATED 15/04/2012 MF. Scrub over brook is very dense. Vegetation on sides dominated by nettle and cleavers.



sp46k22	Poor semi improved grass dominated by <i>Holcus lanatus</i> and <i>Dactylis glomerata</i> ; with frequent <i>Arrhenatherum elatius</i> and <i>Elytrigia repens</i> ; particularly at the edges and occasional <i>Deschampsia cespitosa</i> in the field itself. The flowering plants were all tall ruderal in nature with nettle; creeping and spear thistle; great willowherb; dock; cow parsley and burdock; with bittersweet and bramble also present. UPDATED 15/04/2012 MF. Rank grassland dominated by cocks foot, nettle, cleavers and dock.
sp46k23	The eastern section of this field contains much bare ground through recent disturbance; with ephemeral vegetation dominated by redshank goosefoot and docks. Towards the west a poor semi improved grassland community with no forbs grades in; to become dominated by <i>Lolium perenne</i> and <i>Holcus lanatus</i> ; with frequent <i>Phleum pratense</i> ; <i>Arrhenatherum elatius</i> ; <i>Festuca rubra</i> ; <i>Hordeum secalinum</i> ; <i>Alopecurus pratensis</i> ; <i>Elytrigia repens</i> and <i>Dactylis glomerata</i> . UPDATED 15/04/2012 MF. Now a meadow of improved grassland. Occasional vetch sp. Found.
sp46k24	Poor semi improved grassland with frequent <i>Deschampsia cespitosa</i> ; <i>Holcus lanatus</i> and <i>Dactylis glomerata</i> . There are also frequent thistle on this site. UPDATED 15/04/2012 MF. Remains as described. The grassland is sheep grazed and contains very occasional yellow nettle, ladies bedstraw and birds foot trefoil. Within the strip of scrub there is much bare ground with evidence of rabbit and fox. On the steeper slope of the hillside are numerous anthills.
sp46k25	Poor semi improved grassland with frequent <i>Deschampsia cespitosa</i> ; <i>Holcus lanatus</i> and <i>Dactylis glomerata</i> . There are also frequent thistles on the site. UPDATED 15/04/2012 MF. Remains as described but would classify as improved grassland.
sp46k26	Poor semi improved grassland with frequent <i>Deschampsia cespitosa</i> ; <i>Holcus lanatus</i> and <i>Dactylis glomerata</i> . There are also frequent thistles on the site. UPDATED 15/04/2012 MF. Poor semi-improved grassland dominated by meadow foxtail. Forbs include lesser celandine, common sorrel, common mouse ear and possible pigmut.
sp46k27	This field has just been cut prior to the visit; but there was still <i>Dactylis glomerata</i> ; <i>Holcus lanatus</i> ; <i>Cynosurus cristatus</i> and <i>Festuca rubra</i> . Creeping and meadow buttercup and creeping and spear thistle are still visible but no other forbs were seen. UPDATED 15/04/2012 MF. Poor semi-improved grassland with additional species of meadow vetchling, common sorrel, lesser celandine and possible pigmut.
sp46k28	Rank grassland dominated by <i>Dactylis glomerata</i> ; <i>Arrhenatherum elatius</i> and <i>Deschampsia cespitosa</i> . The forbs are found mostly in large stands dominated by tall ruderal vegetation; or where there is much bare ground and include dock; mugwort; nettle; thistles; melilot; ragwort; mayweed; yarrow; rosebay willowherb; hogweed; creeping cinquefoil and colts foot. UPDATED 08/06/2011 DS. Grazing has reduced species diversity. Species found include nettle, hogweed, dock, bramble, hawthorn and creeping buttercup. UPDATED 15/04/2012 MF. Poor semi-improved sheep grazed grassland. Difficult to identify grasses but forbs include yarrow, teasel, birds foot trefoil, and plantain.
sp46k29	Coarse grassland dominated by <i>Cynosurus cristatus</i> with <i>Arrhenatherum elatius</i> and <i>Dactylis glomerata</i> with frequent nettles and thistles. UPDATED 15/04/2012 MF. Remains as described.
SP46K32	Poor semi-improved neutral grassland with dominant meadow foxtail, frequent creeping thistle, creeping buttercup, occasional false brome, red fescue and dock. UPDATED 15/04/2012 MF. Remains as described with additional species of common mouse ear, cuckoo flower, lesser celandine, thistle, common sorrel, and possible meadow buttercup. Owner Tony Line confirms meadow not improved in last 30yrs and grazed by cattle between may and september.
SP46K34	Man made pond surrounded by soft rush and creeping thistle. UPDATED 15/04/2012 MF. Pond has steep sides and there is no evergreen vegetation and very occasional hard rush. There is also no surface floating vegetation and the water appears to be brown and slimy. Mallard, coot and tufted ducks seen.
sp46k7	A small pond fringed by <i>Glyceria declinata</i> with occasional water cress in the centre. UPDATED 15/04/2012 MF. Highly eutrophic pond dominated by algae. Little emergence of vegetation apart from rush and possible burr reed. Smooth newts seen.



sp46q1	The eastern section of this field contains much bare ground through recent disturbance; with ephemeral vegetation dominated by redshank goosefoot and docks. Towards the west a poor semi improved grassland community with no forbs grades in; to become dominated by <i>Lolium perenne</i> and <i>Holcus lanatus</i> ; with frequent <i>Phleum pratense</i> ; <i>Arrhenatherum elatius</i> ; <i>Festuca rubra</i> ; <i>Hordeum secalinum</i> ; <i>Alopecurus pratensis</i> ; <i>Elytrigia repens</i> and <i>Dactylis glomerata</i> . UPDATED 21/06/2011 DS. No access. UPDATED 27/04/2012 MF. Area is now a small meadow of improved grassland.
sp46q10	Orchard over poor semi improved grassland. UPDATED 27/04/2012 MF. Original orchard damaged by landowner putting goats in to graze about 10yrs ago. They stripped the bark off the trees and they died. Remnant of the orchards are in the area indicated. Locals confirm lesser spotted woodpecker and wood cock seen in area.
sp46q11	Coarse grassland dominated by <i>Cynosurus cristatus</i> with <i>Arrhenatherum elatius</i> and <i>Dactylis glomerata</i> with frequent nettles and thistles. UPDATED 27/04/2012 MF. Remains as described. Additional species of forget-me-not, ground ivy and white and red nettle.
sp46q12	This field has just been cut prior to the visit; but there was still <i>Dactylis glomerata</i> ; <i>Holcus lanatus</i> ; <i>Cynosurus cristatus</i> and <i>Festuca rubra</i> . Creeping and meadow buttercup and creeping and spear thistle are still visible but no other forbs were seen. UPDATED 21/06/2011 DS. Field of improved grassland and grazed, no spear thistle found but frequent creeping buttercup and scattered nettles.
sp46q13	Man made fishing pool; up to six years old at the time of the survey. There is an island in the centre of the pool with ephemeral vegetation and introduced scrub; with broad leaf and coniferous planted trees and occasional <i>Typha latifolia</i> and <i>Juncus inflexus</i> at the edges. Around the edges of the pool there are frequent patches of <i>Juncus inflexus</i> and occasional <i>Juncus effusus</i> ; with <i>Typha latifolia</i> in large but infrequent stands. The edges also contain great willowherb; colts foot and <i>Carex otrubae</i> . In the grassland around the pool there is abundant <i>Phleum pratense</i> ; <i>Holcus lanatus</i> ; and <i>Dactylis glomerata</i> with occasional <i>Hordeum secalinum</i> and <i>Alopecurus pratensis</i> . There are not many forbs present; but meadow vetchling; perforate st johns wort; prickly sowthistle; creeping and spear thistle; <i>Juncus articulatus</i> ; birds foot trefoil and bittersweet. UPDATED 27/04/2012 MF. Willow lake remains as described but all grassland around lake is now regularly mown. So few species of note except near lake edge (cocks foot, knapweed, st johns wort, green willowherb). Eddie Whitehead (Owner) confirmed lesser spotted woodpecker seen 20/04/2012.
sp46q14	A broad ditch which runs through an arable field which is full of tall ruderal vegetation such as nettles thistles and great willowherb. UPDATED 27/04/2012 MF. Dog lane lake and fishery. Consisting of 3 pools. Dog lane, grebe lake (stocked with specimen carp and cat fish) and widgeon lake (silver fish). Grebe lake and widgeon lake are surrounded by poor quality grassland, a sparse mixed plantation and a conifer or hawthorn hedge. There are a few forbs - vetch spp, bristly oxtongue, cranes bill spp - but largely there are dense patches of creeping thistle and dock. Coot, kestrel, mallard and goldfinch seen. Yellow hammer and skylark heard. Emergent vegetation dominated by burr reed and hard rush. Occasional goat willow naturalized on lake edge. Owner - Eddie Whithead (07957861733)
sp46q15	A young plantation over coarse grassland. The trees planted in include alder; hawthorn; field maple; oak; ash and aspen. The grassland still present is dominated by <i>Arrhenatherum elatius</i> ; with <i>Dactylis glomerata</i> ; <i>Holcus lanatus</i> ; <i>Alopecurus pratensis</i> ; <i>Phleum pratense</i> and <i>Elytrigia repens</i> with occasional nettles; goosegrass and meadow vetchling. UPDATED 27/04/2012 MF. Remains as described with additional species of silver birch, hazel and holly. Oak is dominant. Ground layer surrounded by nettle with occasional lesser celandine, herb robert and cow parsley.
sp46q16	Rank grassland dominated by <i>Cynosurus cristatus</i> ; with <i>Arrhenatherum elatius</i> ; <i>Holcus lanatus</i> ; <i>Dactylis glomerata</i> and <i>Phleum pratense</i> . Thistles are abundant across the site with occasional to locally frequent silverweed. UPDATED 21/06/2011 DS. Heavily grazed improved grassland. UPDATED 27/04/2012 MF. Confirmed sheep grazed improved grassland.



## Target Notes

sp46q17	This field has just been cut prior to the visit; but there was still <i>Dactylis glomerata</i> ; <i>Holcus lanatus</i> ; <i>Cynosurus cristatus</i> and <i>Festuca rubra</i> . Creeping and meadow buttercup and creeping and spear thistle are still visible but no other forbs were seen. UPDATED 21/06/2011 DS. Field used for grazing, with scattered nettles. UPDATED 27/04/2012 MF. Area of improved grassland.
sp46q18	Coarse grassland dominated by <i>Cynosurus cristatus</i> with <i>Arrhenatherum elatius</i> and <i>Dactylis glomerata</i> with frequent nettles and thistles. UPDATED 21/06/2011 DS. As described. Improved grassland.
sp46q19	This field has just been cut prior to the visit; but there was still <i>Dactylis glomerata</i> ; <i>Holcus lanatus</i> ; <i>Cynosurus cristatus</i> and <i>Festuca rubra</i> . Creeping and meadow buttercup and creeping and spear thistle are still visible but no other forbs were seen. UPDATED 27/04/2012 MF. Horse grazed improved grassland. Too early in season to identify all species, however, there is dock, creeping buttercup, possible pig weed, common sorrel, lesser celandine and possible meadow buttercup.
sp46q2	Access denied; but visible from the road was a pond with great willow herb; and <i>Juncus inflexus</i> ; with occasional <i>Typha latifolia</i> and <i>Phalaris arundinacea</i> in the south east of the pond itself.
SP46Q23	Church Leys Farm owner Bod Crick. Area 14.97 hectares. RSPB survey 2008. Red species recorded: bullfinch, linnets, song thrush, starling. Amber species recorded: willow warblers, green woodpecker, redwing, miracle thrush, cuckoo, goldcrest, fieldfare, herring gull. No hedgehogs seen for 20 yrs. Badger territories surround the land along its boundaries. 98 species of trees planted over last 45 yrs as part of developing a tree nursery for Warwickshire Nature Conservation Trust. (WARNACT; The old Warwickshire Wildlife Trust). Beech, alder, walnut, apple, pear, hornbeam, lime, yew, cedar, fir, eucalyptus. Mr. Crick would welcome a full tree survey. Last contact 1990 when hedge survey completed. He has also considered giving the land as a gift to the Warwickshire Wildlife Trust, but because there would be no legacy to accompany the property, WWT refused. Also some of the land is owned by Shuckburgh estate. Farmed organically. The Ark school regularly visit the woodland to do environmental teaching - Special needs school for 7-11 (severe emotional problems).
SP46Q25	poor semi-improved sheep grazed ridge and furrow meadow. Sweet vernal grass, buttercup, occasional vetch spp. Field wood rush, sheeps sorrel, lesser celandine. At the end of the meadow is a small stream and the grassland here is marshy with frequent hard rush and tufted hair grass. 3 hares seen. Swallow seen.
sp46q3	Coarse grassland along a road side with <i>Phleum pratense</i> ; <i>Arrhenatherum elatius</i> and <i>Lolium perenne</i> most frequent and occasional <i>Deschampsia cespitosa</i> and <i>Juncus inflexus</i> . Thistles; mayweed and yarrow were also present. UPDATED 27/04/2012 MF. Now a small area of dense hawthorn, blackthorn, and elder scrub.
sp46q4	A pond in which there is abundant branched bur-reed and occasional <i>Schoenoplectus lacustris</i> . The edge of the pool are dominated by great willow herb with patches of <i>Juncus inflexus</i> .
sp46q5	Poor semi improved grassland with <i>Phleum pratense</i> ; <i>Arrhenatherum elatius</i> ; <i>Dactylis glomerata</i> and <i>Holcus lanatus</i> . Thistles and nettles are scattered about the site. UPDATED 21/06/2011 DS. Remains as previously described, except no thistles or nettles.
sp46q6	Poor semi improved grassland with <i>Phleum pratense</i> ; <i>Arrhenatherum elatius</i> ; <i>Dactylis glomerata</i> and <i>Holcus lanatus</i> . Thistles and nettles are scattered about the site. UPDATED 21/06/2011 DS. Sheep pasture. UPDATED 27/04/2012 MF. Sheep grazed field with characteristics of improved grassland and patches of nettle.
sp46q7	Poor semi improved grassland with <i>Arrhenatherum elatius</i> ; <i>Dactylis glomerata</i> ; <i>Anthoxanthum odoratum</i> ; <i>Lolium perenne</i> and <i>Holcus lanatus</i> . There is scattered scrub over the site; with occasional nettles; buttercup and dandelion. UPDATED 21/06/2011 DS. Now mostly allotments, with a small patch of semi-improved neutral grassland. UPDATED 27/04/2012 MF. Allotments confirmed. The small areas of semi-improved grassland is being encroached by dense bramble. A quick survey identified green alkanet, teasel, vetch spp. Tame spp as additional species.

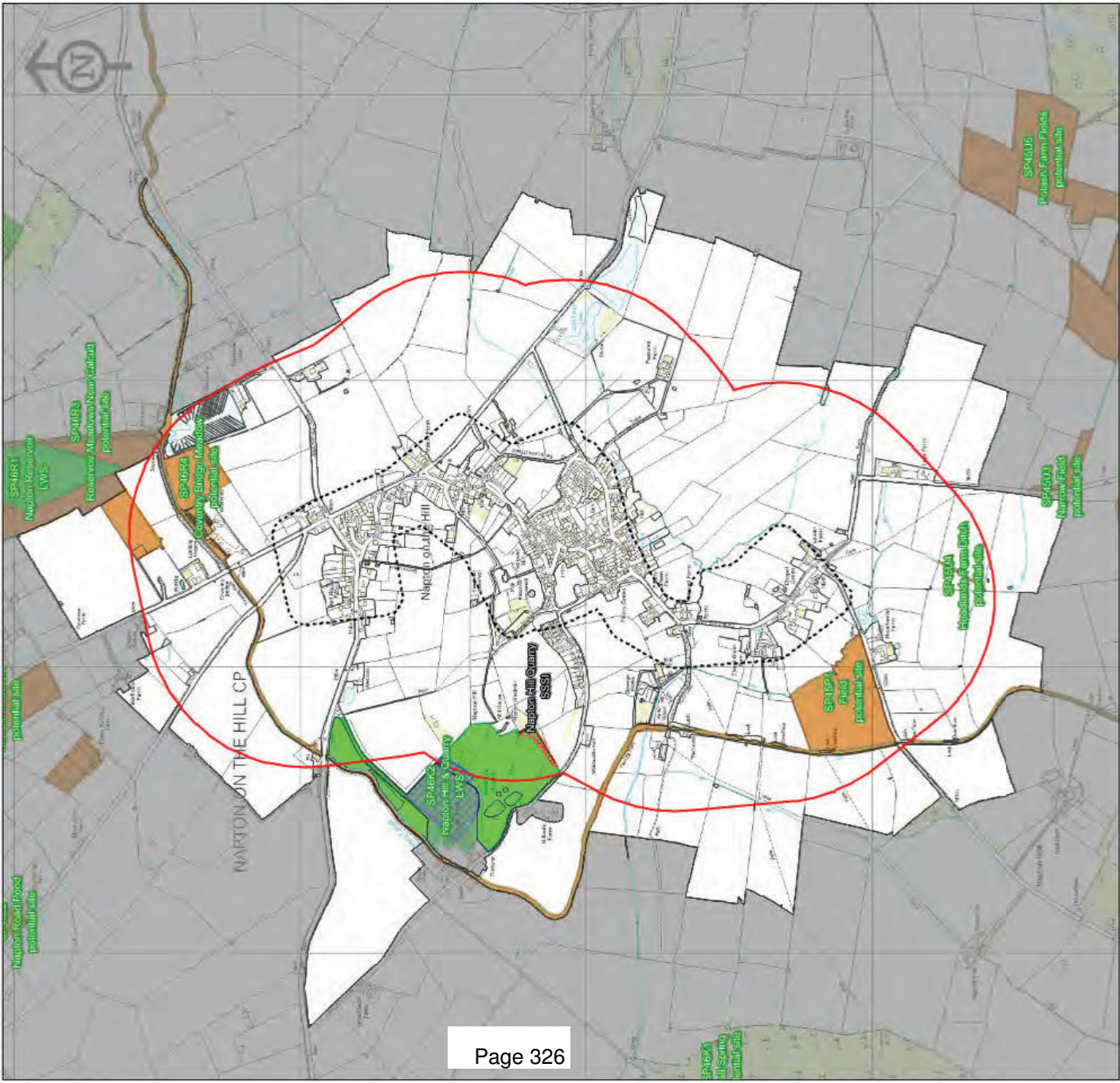


sp46q8	A mosaic of bare ground; tall ruderal vegetation and poor semi improved grass with <i>Arrhenatherum elatius</i> ; <i>Dactylis glomerata</i> ; <i>Holcus lanatus</i> ; nettles, thistles and dock. UPDATED 27/04/2012 MF. Area remains a mix of habitats with bare ground, scrub and improved grassland. The most diverse area appears to be a small area of beech sycamores which may have seeded naturally from trees alongside the footpath. There is no understory however. The ground flora includes bluebells (white and blue hybrids), primrose, cowparsley, and cultivated daffodill. A small orchard as been planted on site.
sp46q9	Coarse grassland dominated by <i>Cynosurus cristatus</i> with <i>Arrhenatherum elatius</i> and <i>Dactylis glomerata</i> with frequent nettles and thistles. UPDATED 27/04/2012 MF. Remains as described. No forbs to note.
sp46r1	Willow trees over a small pool in which there is no aquatic vegetation. UPDATED 18/07/2011 DS. Pond is now completely dry surrounded by overhanging willow.
sp46r10	Road side verge with ditch and hawthorn hedge. The ditch is full of great willow herb. The verge itself is dominated by <i>Arrhenatherum elatius</i> ; with frequent <i>Dactylis glomerata</i> ; <i>Deschampsia cespitosa</i> ; <i>Holcus lanatus</i> ; <i>Phleum pratense</i> ; <i>Alopecurus pratensis</i> and <i>Lolium perenne</i> . There is abundant creeping and spear thistle; meadow vetchling and nettles; with occasional to locally frequent red bartsia; common vetch; agrimony; wild angelica and <i>Carex otrubae</i> . UPDATED 23/04/2012 MF. Too early in season but appears to remain as described with additional species of meadow sweet forgive me not, elm and wild pirvet.
sp46r18	A small patch of coarse grass in the corner of an arable field but separated from it by a line of dense scrub. The grasses present were predominantly <i>Arrhenatherum elatius</i> ; <i>Deschampsia cespitosa</i> and <i>Dactylis glomerata</i> . Other species present include hogweed; teasel; ragwort and creeping thistle. UPDATED 23/04/2012 MF. Viewed from roadside. It appears area remains as described. Additional species - St. johns wort.
sp46r19	Oxford canal with the tow path on the north. The opposite bank has dense <i>Glyceria maxima</i> along the edge with occasional branched bur-reed; wild angelica; meadowsweet; water figwort; gipsywort; water dock; <i>Juncus inflexus</i> and marsh woundwort. The edge of the tow path has very little vegetation; and had been recently cut before the survey. UPDATED 23/04/2012 MF. Too early in season to identify all species previously recorded. However at time of survey, hard rush and bur reed appeared to be dominant. Ash saplings establishing.
sp46r2	A semi improved field dominated by <i>Phleum pratense</i> and <i>Holcus lanatus</i> ; with frequent <i>Lolium perenne</i> ; <i>Festuca rubra</i> ; <i>Agrostis capillaris</i> and <i>Bromus</i> sp. There is also occasional <i>Deschampsia cespitosa</i> ; <i>Alopecurus pratensis</i> and <i>Cynosurus cristatus</i> . The forbs are not frequent but are widespread; with creeping and meadow buttercup; ragwort; creeping and spear thistle; tufted vetch and docks; with occasional <i>Juncus conglomeratus</i> and black knapweed in the north corner.
sp46r20	Oxford canal; The edge of the tow path had varied flora; with silverweed; water dock; <i>Juncus inflexus</i> ; wild angelica; branched bur-reed; water forget-me-not; meadowsweet; <i>Glyceria maxima</i> ; <i>Phalaris arundinacea</i> and water figwort all recorded; but none forming a dominant part of the community. A grass snake was seen in the hedge at the north of the canal. UPDATED 23/04/2012 MF. Too early in season to identify all species present, but appears to remain as described with additional species of cocks foot and St. john's wort.
sp46r21	A pond in an improved field to which the surveyor did not gain access. It was not possible to tell how much water was present. Abundant <i>Deschampsia cespitosa</i> was visible around the edges; with great willow herb; nettles and dock also seen. UPDATED 23/04/2012 MF. Note a pond area forms part of marina. Swan, coot seen.
sp46r24	No direct access to this field but viewed from the opposite bank of the canal it was seen to be a sheep grazed field dominated by <i>Deschampsia cespitosa</i> . There was no other species discernible from the viewing point.3 . UPDATED 23/04/2012 MF. Remains as described, other species include dock, creeping thistle and hard rush.





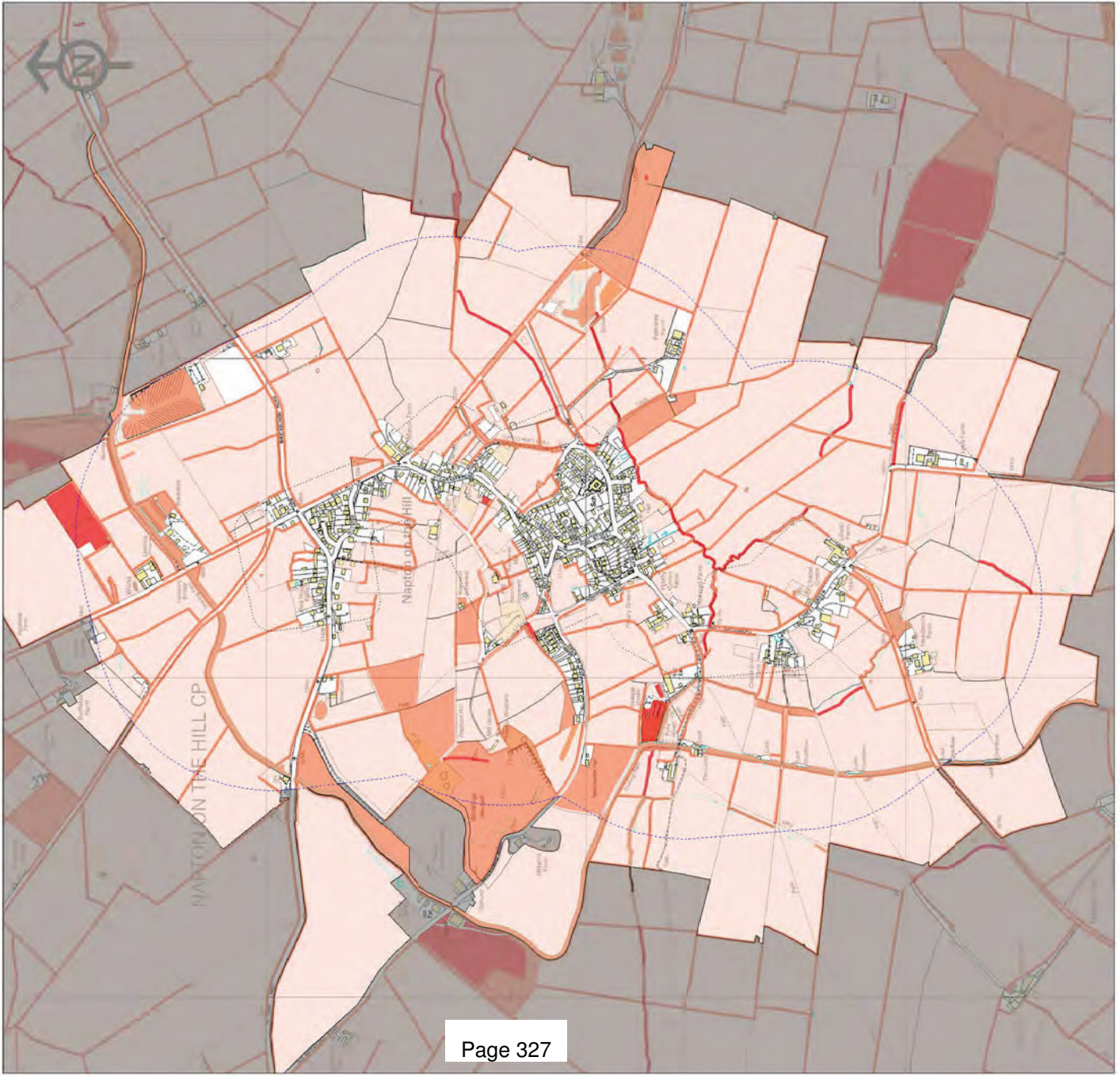
# NAPTON ON THE HILL



- SITES OF SPECIAL SCIENTIFIC INTEREST**
  - SSSI
- ANCIENT WOODLAND**
  - Ancient Woodland
- LOCAL WILDLIFE SITES**
  - DEFERRED SITE
  - LOCAL WILDLIFE SITE
  - POTENTIAL LOCAL WILDLIFE SITE
- LOCAL NATURE RESERVE**
  - LN
- WARWICKSHIRE WILDLIFE TRUST RESERVES**
  - WWT Reserve
- LOCAL GEOLOGICAL SITE**
  - LGS
- OS DEVELOPED LAND USE AREA**
  - Settlements
- STUDY AREA**
  - 500m buffer

© Crown copyright, 2012. All rights reserved. Licence No. 100019320. Copyright of the data remains the property of the Habitat Biodiversity Audit for Warwickshire, Coventry and Solihull. While every effort has been made to ensure that the data is accurate in accordance with Phase 1 habitat survey standards the project cannot guarantee its accuracy or accept responsibility for any changes to land use or habitat that may have occurred since the survey was undertaken.

# NAPTON ON THE HILL



### Settlement Distinctiveness

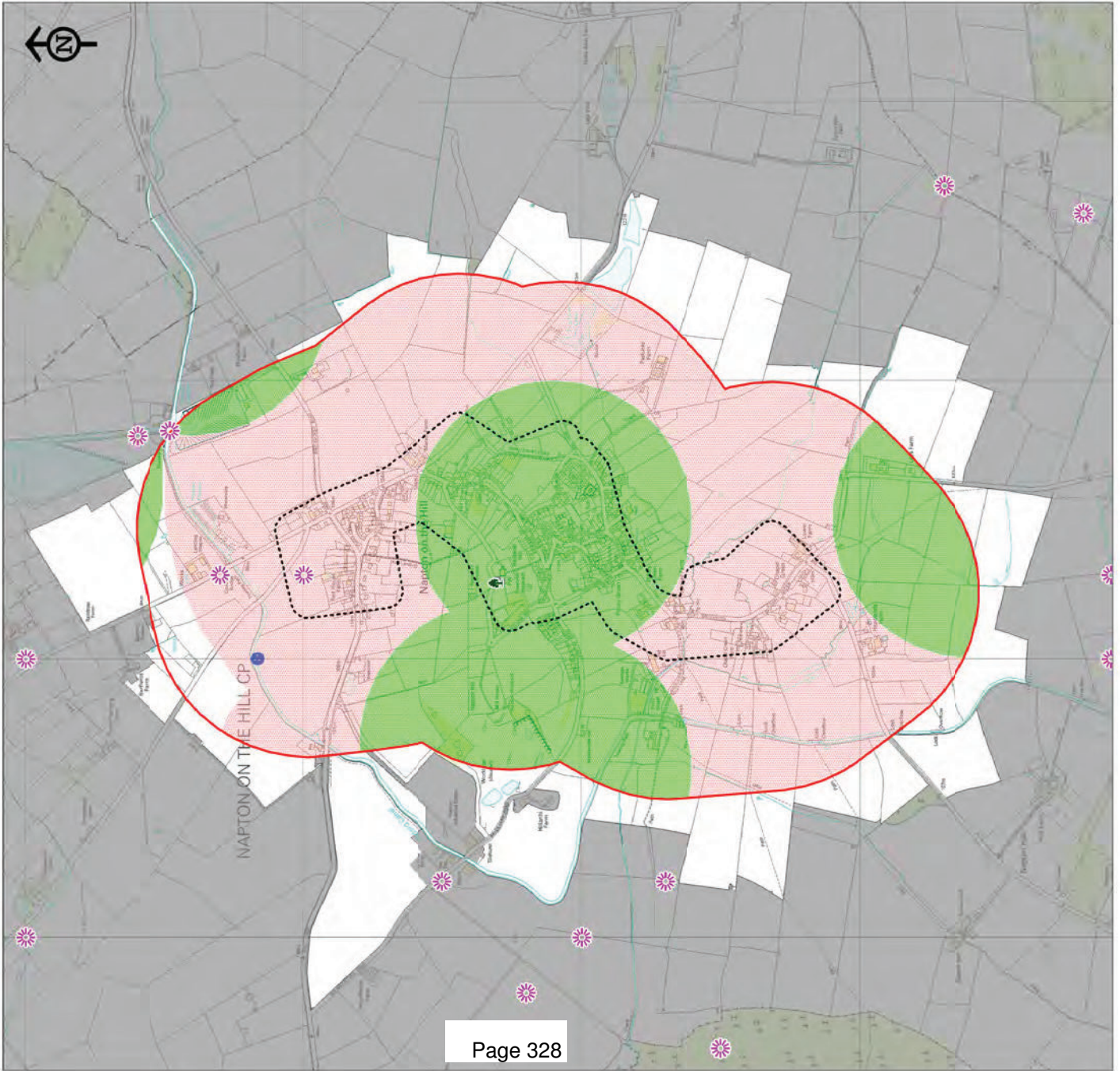
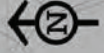
- 3: HIGH
- 2: MODERATE
- 1: LOW

### OS DEVELOPED LAND USE AREA

- STUDY AREA
- 500m buffer
- Settlements

© Crown copyright, 2012. All rights reserved. Licence No. 100019520. Copyright of the data remains the property of the Habitat Biodiversity Audit for Warwickshire, Coventry and Solihull. While every effort has been made to ensure that the data is accurate in accordance with Practice habitat survey standards the project cannot guarantee its accuracy or accept any liability for any changes to land use or habitat that may have occurred since the survey was undertaken.

# NAPTON ON THE HILL



## Species

Buffer zone for water vole or white-clawed crayfish

Buffer zone for protected amphibians and reptiles

Buffer zone for bat

Black Poplar

Veteran tree

County rare plant

STUDY AREA

500m buffer

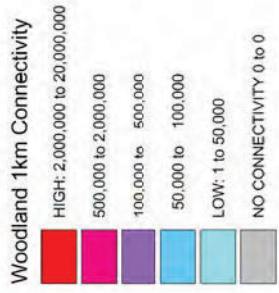
OS DEVELOPED LAND USE AREA

Settlements

Warwickshire Biological Records Centre



# NAPTON ON THE HILL

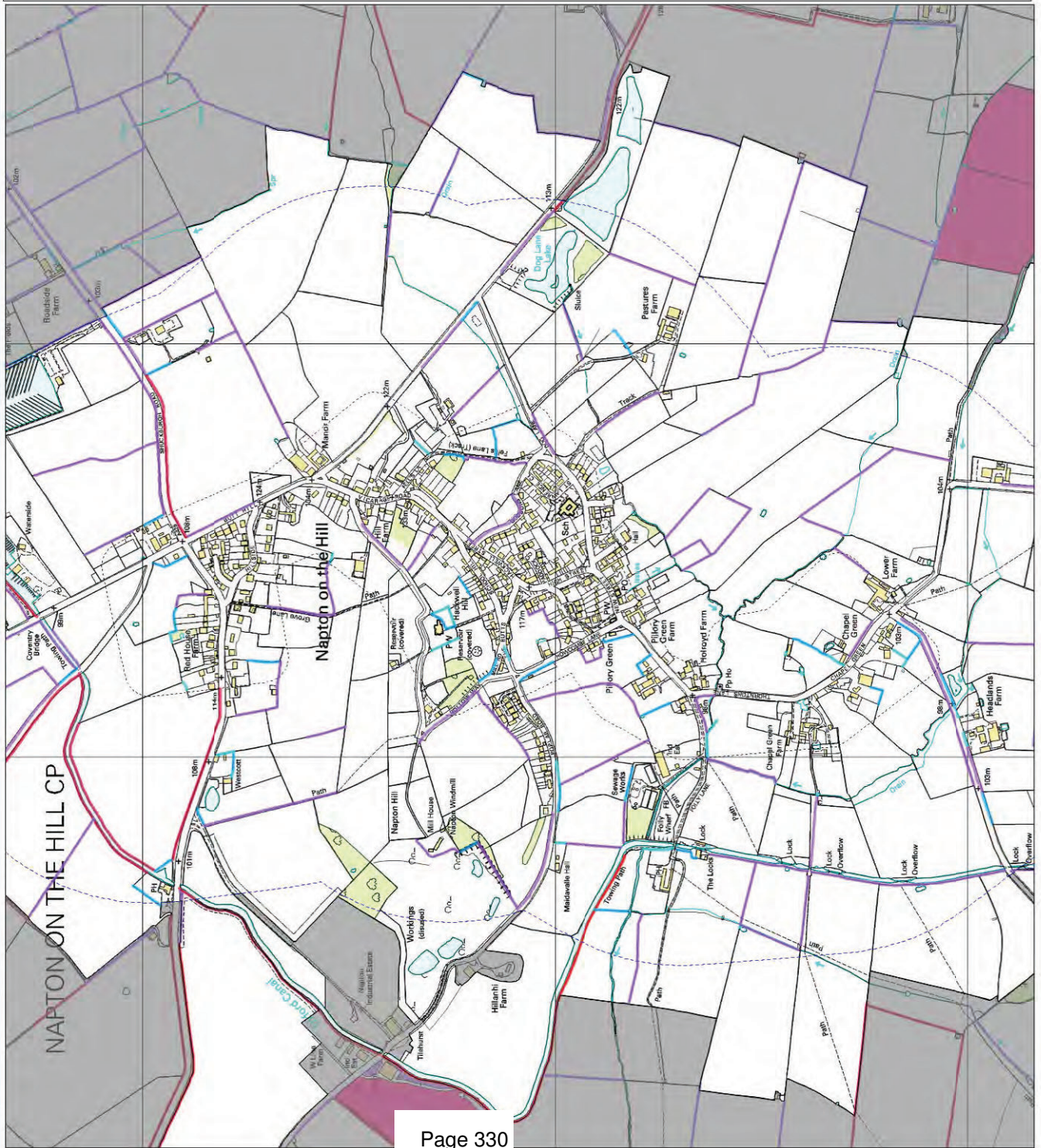


© Crown copyright, 2012. All rights reserved. Licence No. 100019520. Copyright of the data remains the property of the Habitat Biodiversity Audit for Warwickshire, Coventry and Solihull. While every effort has been made to ensure that the data is accurate in accordance with Practice habitat survey standards the project cannot guarantee its accuracy or accept any changes to land use or habitat that may have occurred since the survey was undertaken.

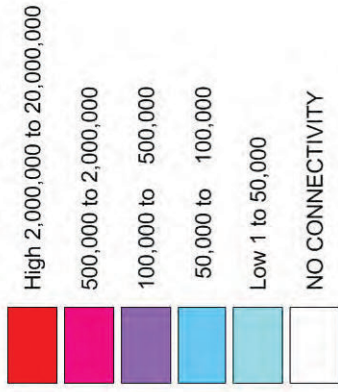


HABITAT BIODIVERSITY AUDIT  
Warwickshire Historic and Natural Environment  
Barrack Street  
Warwick  
CV34 4TH  
Tel: 01926 412 197  
Email: hba@warwickshire.gov.uk

# NAPTON ON THE HILL



## Grassland 1km Connectivity

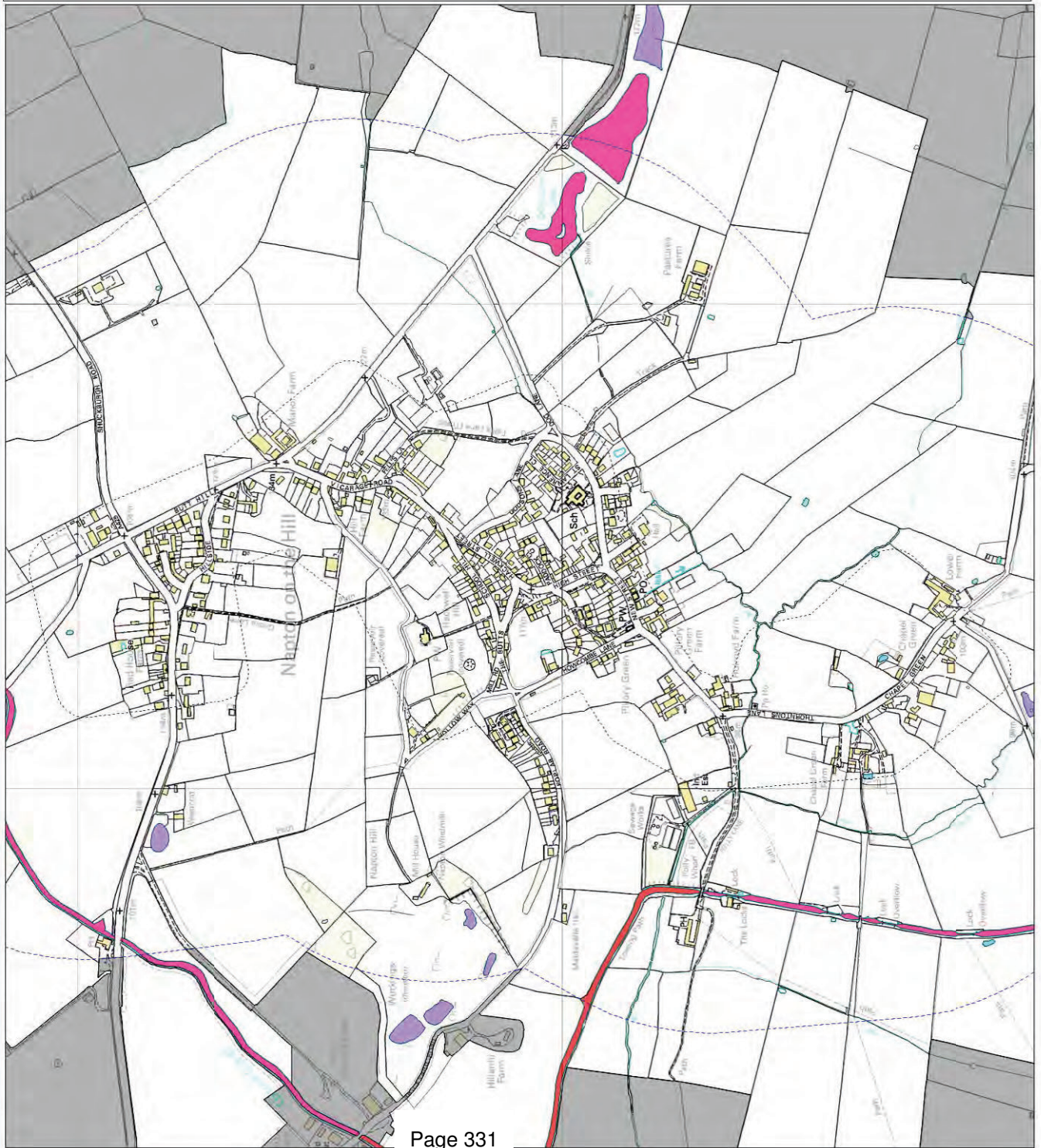


© Crown copyright, 2012. All rights reserved. Licence No. 100019520. Copyright of the data remains the property of the Habitat Biodiversity Audit for Warwickshire, Coventry and Solihull. While every effort has been made to ensure that the data is accurate in accordance with phase 1 habitat survey standards the project cannot guarantee its accuracy or accept responsibility for any changes to land use or habitat that may have occurred since the survey was undertaken.

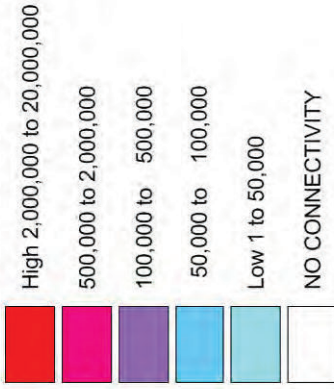
PRINTED 02/07/2012



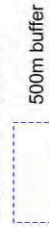
# NAPTON ON THE HILL



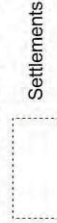
### Pond 1km Connectivity



### STUDY AREA



### OS DEVELOPED LAND USE AREA



© Crown copyright, 2012. All rights reserved. Licence No. 100019520. Copyright of the data remains the property of the Habitat Biodiversity Audit for Warwickshire, Coventry and Solihull. While every effort has been made to ensure that the data is accurate in accordance with Phase 1 habitat survey standards the project cannot guarantee its accuracy or accept responsibility for any changes to land use or habitat that may have occurred since the survey was undertaken.

## Stratford-on-Avon District Council

## Ecological and Geological Study of Local Service Villages

## Settlement Assessment: Newbold-on-Stour

## Designated sites:

Status:	Area in hectares	Grid ref.	Description
<b>LWS potential site</b>			
SP23Li17n River Stour	78.73	SP256441	Water courses & water bodies

## Key Target Notes

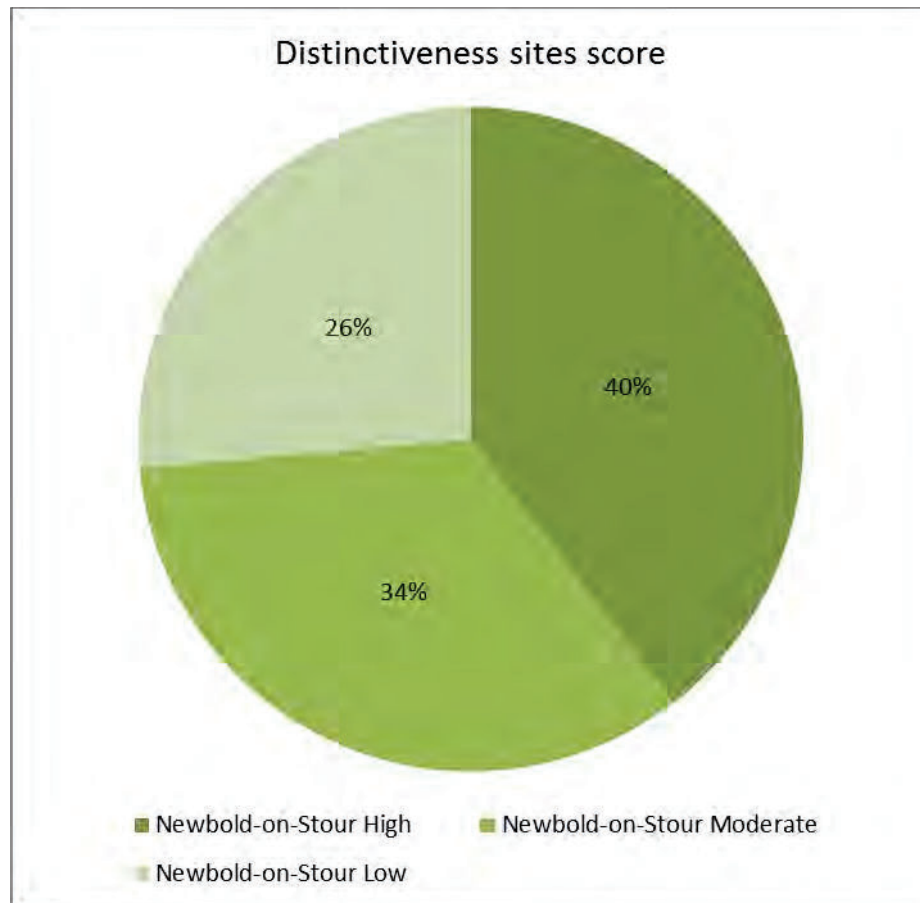
- Ettington Park broad leaved parkland and scattered trees
- SP24n26 Species rich hedgerow

## Habitat Descriptions

The two habitats most associated with high distinctiveness are the River Stour and semi-natural woodlands on and around Ettington Park. There are also areas of broad-leaved plantation which are a feature of the estate grounds.

Distinctiveness Phase 1 habitats	No. of sites	Area in hectares	Score
<b>High</b>			
A111 Broad-leaved semi-natural woodland	12	1.57	36
A5 Orchard (commercial)	1	0.06	3
B22 Semi-improved neutral grassland	2	0.90	6
B5 Marsh/marshy grassland	1	0.19	3
G1 Standing water	1	0.08	3
G2 Running water	7	4.65	21
<b>Sub Total</b>	<b>24</b>	<b>7.45</b>	<b>72</b>
<b>Moderate</b>			
A112 Broad-leaved plantation	11	3.10	22
A131 Mixed semi-natural woodland	1	0.11	2
A21 Dense/continuous scrub	7	3.53	14
A22 Scattered scrub	3	1.01	9
B6 Semi-improved neutral grassland	6	24.48	12
J112 Allotments	3	1.26	6
<b>Sub Total</b>	<b>31</b>	<b>33.50</b>	<b>65</b>

<b>Low</b>			
A132 Mixed plantation	1	0.81	1
B4 Improved grassland	19	31.30	19
C31 Tall ruderal	3	5.00	6
J11 Arable	15	155.93	15
J12 Amenity grassland	10	2.19	20
<b>Sub Total</b>	<b>48</b>	<b>195.22</b>	<b>61</b>
<b>Totals</b>	<b>103</b>	<b>236.17</b>	<b>198</b>



### **Geological Description**

Newbold-on-Stour has considerable potential for its latest Triassic geology and overlying superficial (Quaternary) deposits. Any excavations into natural geology would be of potential interest for purposes of recording and/or museum collecting.

### **Protected Species**

Badger, hedgehog and otter plus the bat species of common pipistrelle and indeterminate bat species plus rare plants of fine-leaved sandwort and hounds tongue, have been recorded in the settlement area. In the wider area there are additional record of great crested newt, grass snake, brown hare, common lizard, slow-worm and barn owl with butterfly species of small heath and wall plus additional bat records of myotis sp., soprano pipistrelle, brown long-eared, natterers, noctule, serotine and lesser horseshoe. There are also rare plants including cat-mint, longleaf, small scabious, blue water-



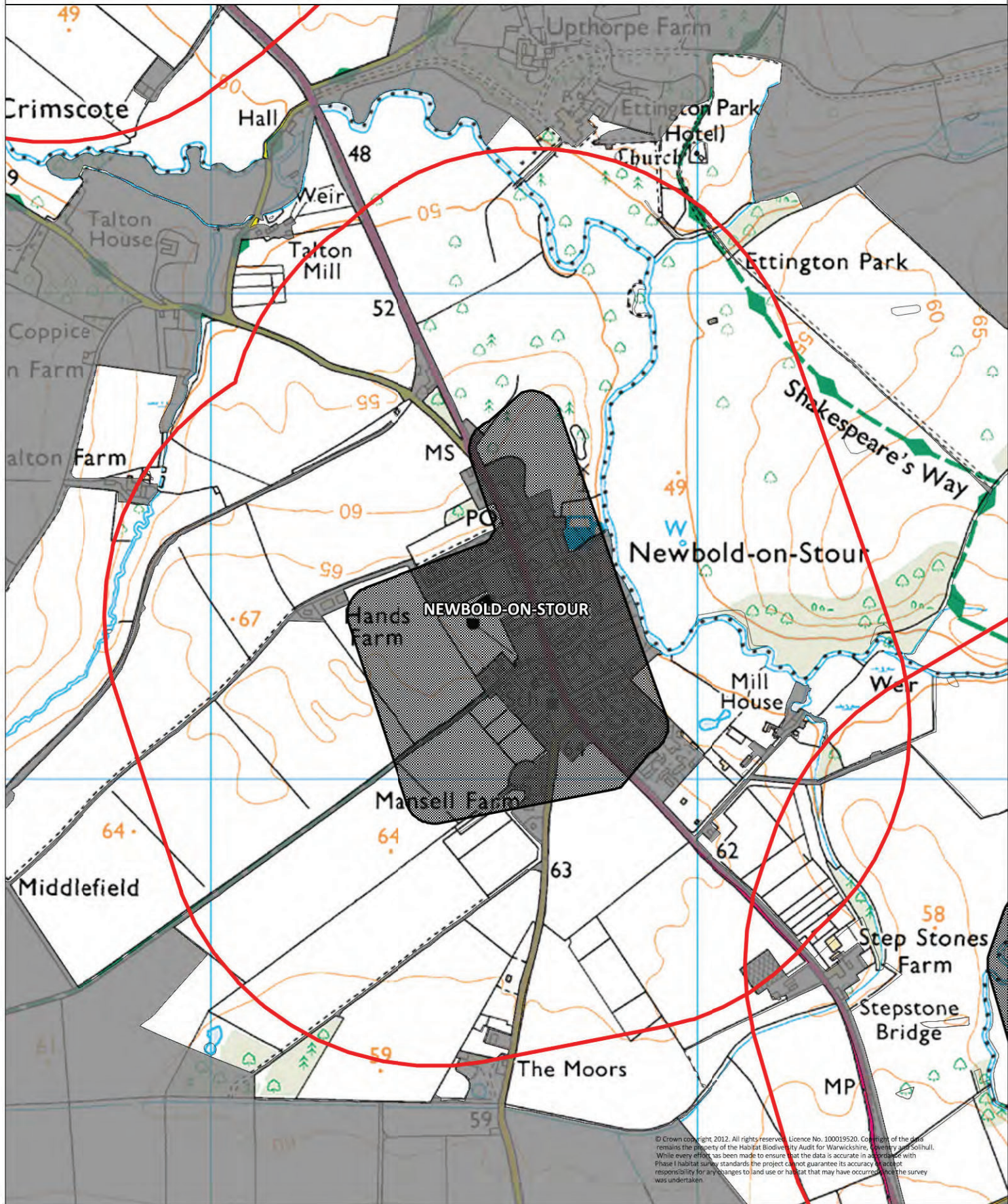
speedwell, strawberry clover, round-leaved cranesbill, cornfield knotgrass, early marsh orchid, dropwort, henbane, dwarf elder and green-winged orchid recorded in the wider area.

### **Recommendations for Further Survey**

- River Stour



# NEWBOLD-ON-STOUR



© Crown copyright 2012. All rights reserved. Licence No. 100019520. Copyright of the data remains the property of the Habitat Biodiversity Audit for Warwickshire, Coventry and Solihull. While every effort has been made to ensure that the data is accurate in accordance with Phase 1 habitat survey standards, the project cannot guarantee its accuracy. We accept responsibility for any changes to land use or habitat that may have occurred since the survey was undertaken.

2.4 SQKM

Settlements



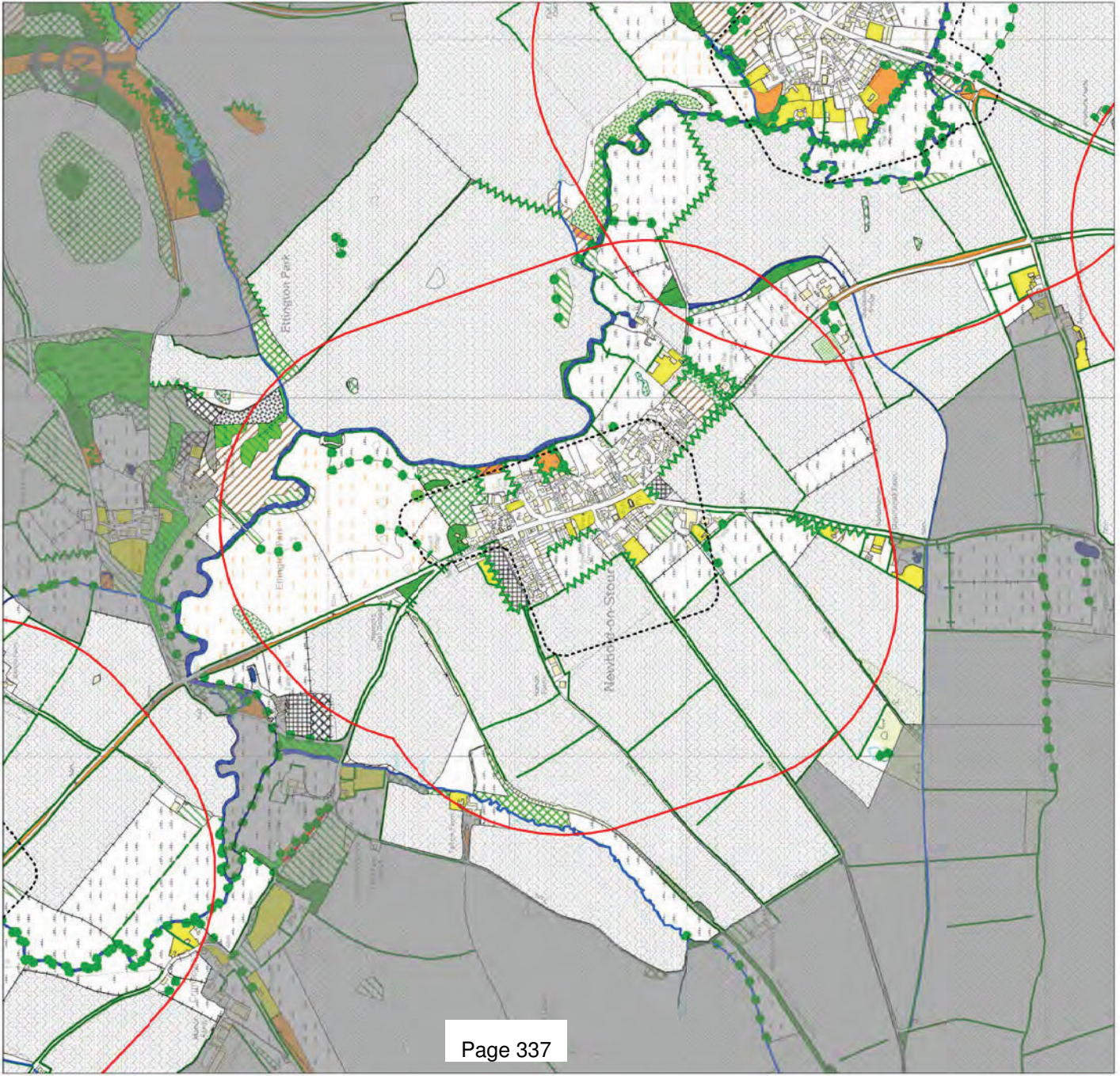
Settlements

500m Buffer



500m Buffer

# NEWBOLD-ON-STOUR



## PHASE 1 HABITAT SURVEY

- Habitat Types
- A111 (Broad-leaved semi-natural woodland)
  - A112 (Broad-leaved plantation)
  - A121 (Coniferous semi-natural woodland)
  - A122 (Coniferous plantation)
  - A131 (Mixed semi-natural woodland)
  - A132 (Mixed plantation)
  - A21 (Dense/continuous scrub)
  - A22 (Scattered scrub)
  - A31 (Broad-leaved parkland/scattered trees)
  - A32 (Coniferous parkland/scattered trees)
  - A4 (Recently felled woodland)
  - A5 (Orchard)
  - B11 (Unimproved acidic grassland)
  - B12 (Semi-improved acidic grassland)
  - B21 (Unimproved neutral grassland)
  - B22 (Semi-improved neutral grassland)
  - B31 (Unimproved calcareous grassland)
  - B32 (Semi-improved calcareous grassland)
  - B4 (Improved grassland)
  - B5 (Marsh/marshy grassland)
  - B6 (Poor semi-improved grassland)
  - C11 (Continuous bracken)
  - C31 (Tall ruderal)

- C32 (Non-ruderal)
- D5 (Dry heath/acid grassland mosaic)
- E11 (Sphagnum Bog)
- E21 (Acid/neutral flush)
- E31 (Valeiy mire)
- E32 (Basin mire)
- F1 (Swamp)
- F22 (Inundation vegetation)
- G1 (Standing water)
- G2 (Running water)
- I21 (Quarry)
- I22 (Spoil)
- I23 (Mire)
- I24 (Refuse tip)
- J11 (Arable)
- J112 (Allotments)
- J113 (Set-aside)
- J12 (Amenity grassland)
- J13 (Ephemeral/short perennial)
- J14 (Introduced shrub)
- J36 (Buildings)
- J4 (Bare ground)

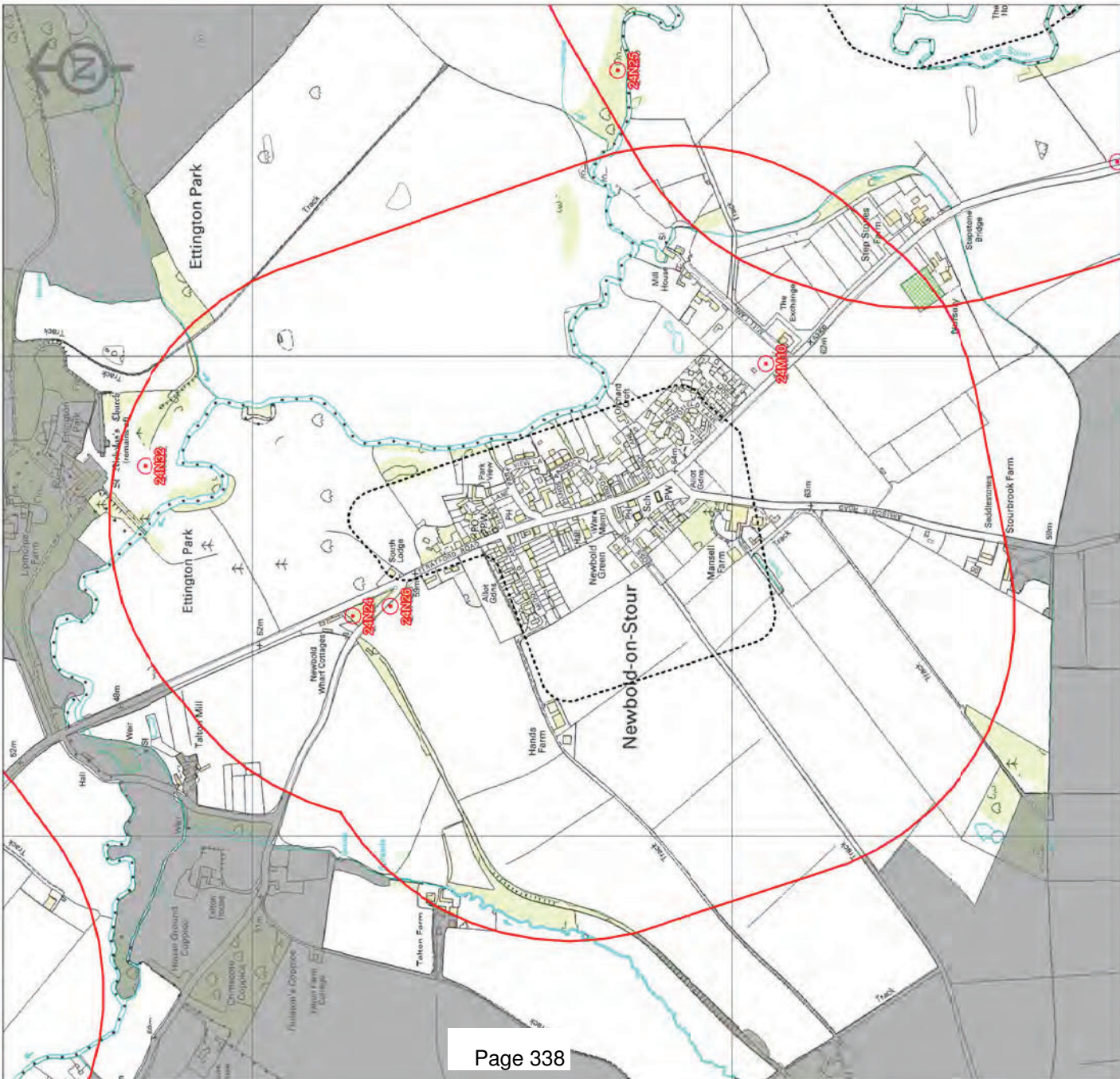
- Linear Features
- A21 (Linear Scrub)
  - A3 (Linear Trees)
  - G1 (Standing Water)
  - G2 (Running Water)
  - I1 (Inland Cliff)
  - J21 (Intact Hedge)
  - J211 (Native Species Rich Intact Hedge)
  - J22 (Defunct Hedge)

- J23 (Hedge with Trees)
- J231 (Native Species Rich Hedge with Trees)
- J24 (Fence)
- J25 (Wall)
- J26 (Dry Ditch)
- J27 (Boundary Removed)
- J28 (Earth Bank)

- STUDY AREA
- 500m buffer
  - OS DEVELOPED LAND USE AREA
  - Settlements

© Crown copyright, 2012. All rights reserved. Licence No. 1000192020. Copyright of the data remains the property of the Habitat Biodiversity Audit for Warwickshire, Coventry and Solihull. While every effort has been made to ensure that the data is accurate in accordance with Phase 1 habitat survey standards the project cannot guarantee its accuracy or accept any liability for any changes to land use or habitat that may have occurred since the survey was undertaken.

# NEWBOLD-ON-STOUR



**TARGET NOTES**  
 Point

**OS DEVELOPED LAND USE AREA**  
 Settlements

**STUDY AREA**  
 500m buffer

© Crown copyright, 2012. All rights reserved. Licence No. 100019220. Copyright of the data remains the property of the Habitat Biodiversity Audit for Warwickshire, Coventry and Solihull. While every effort has been made to ensure that the data is accurate in accordance with Practice habitat survey standards the project cannot guarantee its accuracy or accept any liability for any changes to land use or habitat that may have occurred since the survey was undertaken.

## Newbold-on-Stour

sp24m10	Area of rough grassland dominated by <i>Arrhenatherum elatius</i> ; <i>Dactylis glomerata</i> ; <i>Elytrigia repens</i> and <i>Holcus lanatus</i> with scattered teasel; broad-leaved dock; nettle and ragwort and hawthorn scrub. The site appears to be awaiting building work. UPDATED 14/05/2012 CFT. Area of scrub and ruderal including ruby willow herb, elder, hawthorn, bramble, cleavers and common nettle.
sp24n24	Regenerating ash woodland with frequent young elm and abundant blackthorn along the edges. The ground flora is limited to nettle and ground ivy with occasional <i>Bromus ramosus</i> ; <i>Dactylis glomerata</i> and <i>Poa trivialis</i> .
SP24N26	Species rich hedgerow with mature ash and sycamore; regenerating elm, hazel, and hawthorn, bramble and elder. Ground flora includes ground ivy ( <i>Glechoma hederacea</i> ), ivy ( <i>Hedera helix</i> ), lords and ladies ( <i>Arum maculatum</i> ), broad leaved dock ( <i>Rumex obtusifolius</i> ), garlic mustard ( <i>Alliaria petiolata</i> ), red dead nettle ( <i>Lamium purpureum</i> ), dandelion ( <i>tazacum spp</i> ), borage ( <i>Borago officinalis</i> ).
SP24N32	Ettington park - broad leaved parkland/scattered trees, cedar of Lebanon, lime and horse chestnut. Ettington park is now a hotel, surrounding parkland is sheep grazed.



# NEWBOLD-ON-STOUR

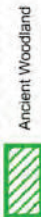


## SITES OF SPECIAL SCIENTIFIC INTEREST



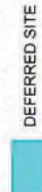
SSSI

## ANCIENT WOODLAND

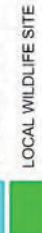


Ancient Woodland

## LOCAL WILDLIFE SITES



DEFERRED SITE



LOCAL WILDLIFE SITE



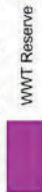
POTENTIAL LOCAL WILDLIFE SITE

## LOCAL NATURE RESERVE



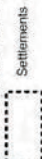
LNR

## WARWICKSHIRE WILDLIFE TRUST RESERVES



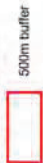
WWT Reserve

## OS DEVELOPED LAND USE AREA



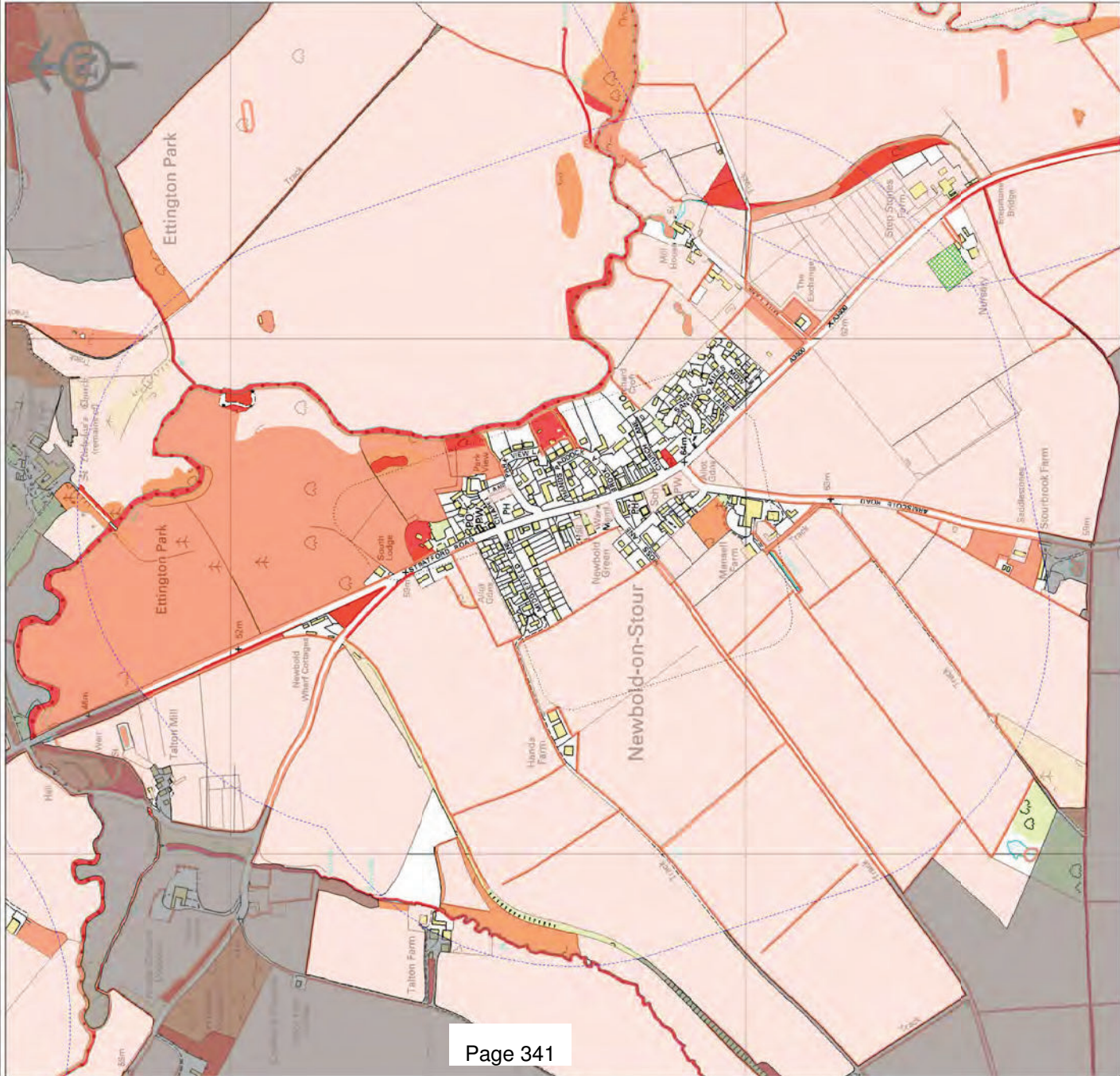
Settlements

## STUDY AREA



500m buffer

# NEWBOLD-ON-STOUR



**Settlement Distinctiveness**

- 3: HIGH
- 2: MODERATE
- 1: LOW

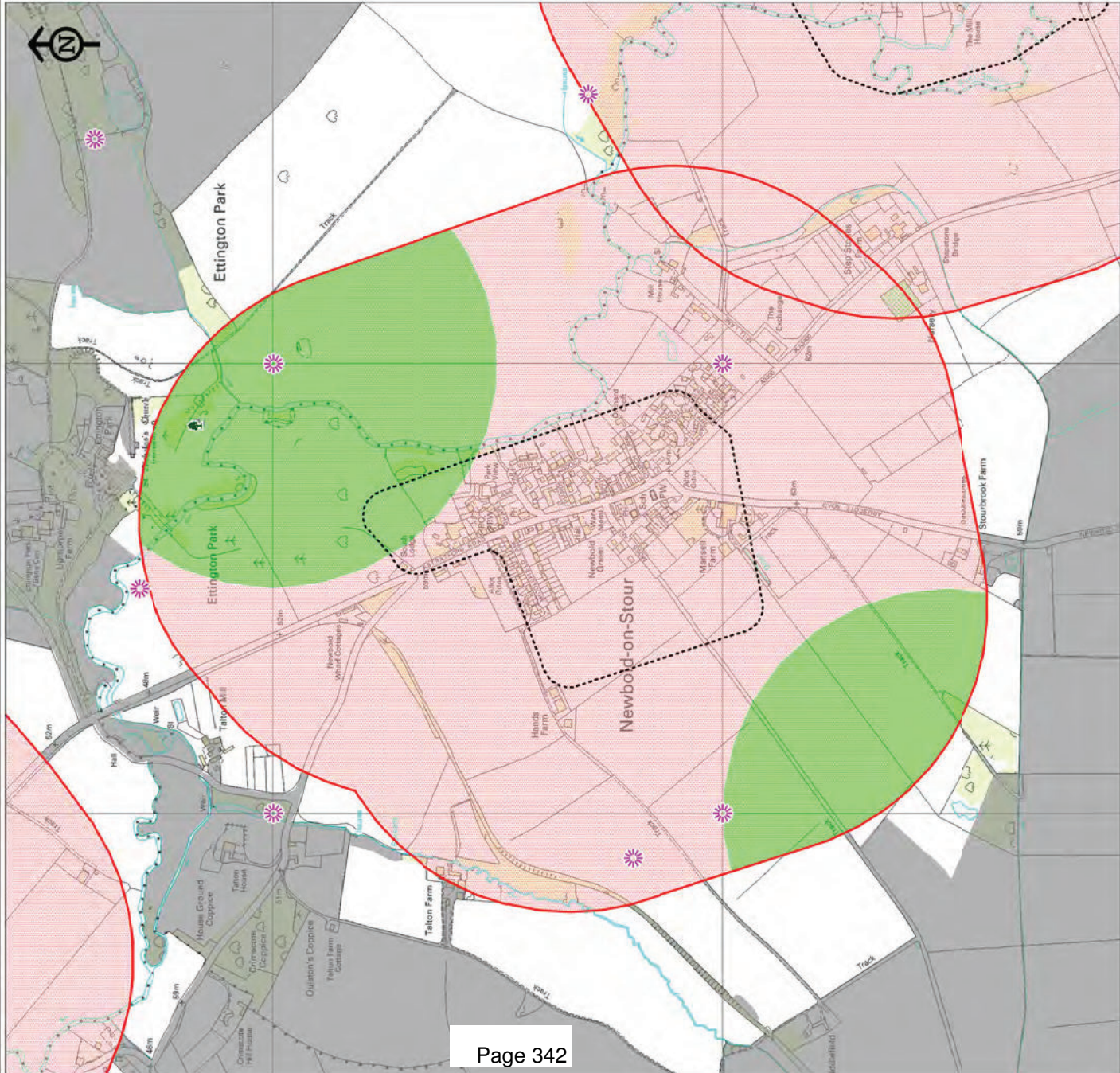
**OS DEVELOPED LAND USE AREA**

- STUDY AREA
- 500m buffer

Settlements

© Crown copyright, 2012. All rights reserved. Licence No. 100019520. Copyright of the data remains the property of the Habitat Biodiversity Audit for Warwickshire, Coventry and Solihull. While every effort has been made to ensure that the data is accurate in accordance with Phase 1 habitat survey standards the project cannot guarantee its accuracy or accept liability for any changes to land use or habitat that may have occurred since the survey was undertaken.

# NEWBOLD-ON-STOUR



## Species

- Buffer zone for water vole or white-clawed crayfish
- Buffer zone for protected amphibians and reptiles
- Buffer zone for bat
- Black Poplar
- Veteran tree
- County rare plant

Warwickshire Biological Records Centre

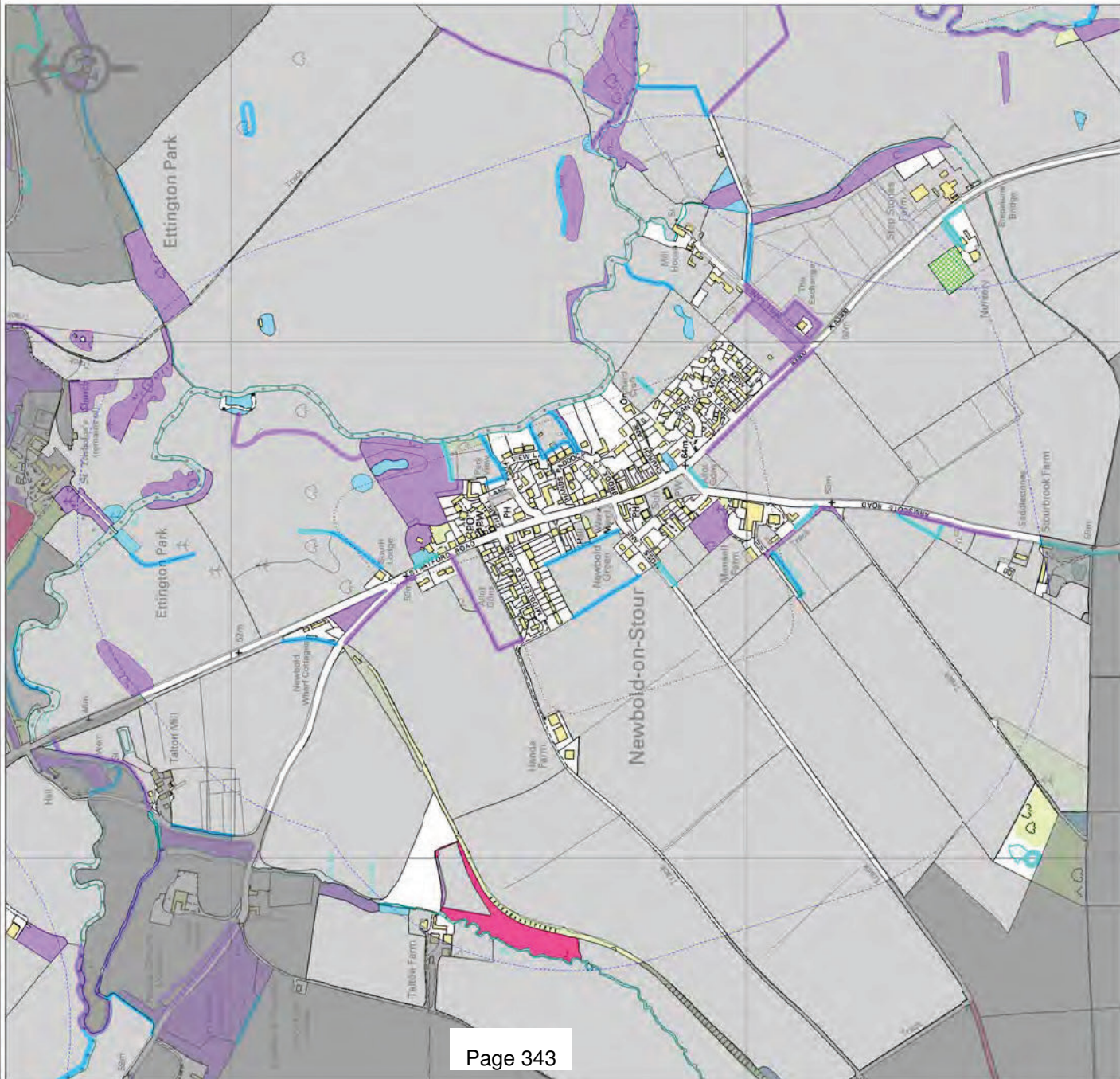


**STUDY AREA**  500m buffer

**OS DEVELOPED LAND USE AREA**  Settlements



# NEWBOLD-ON-STOUR

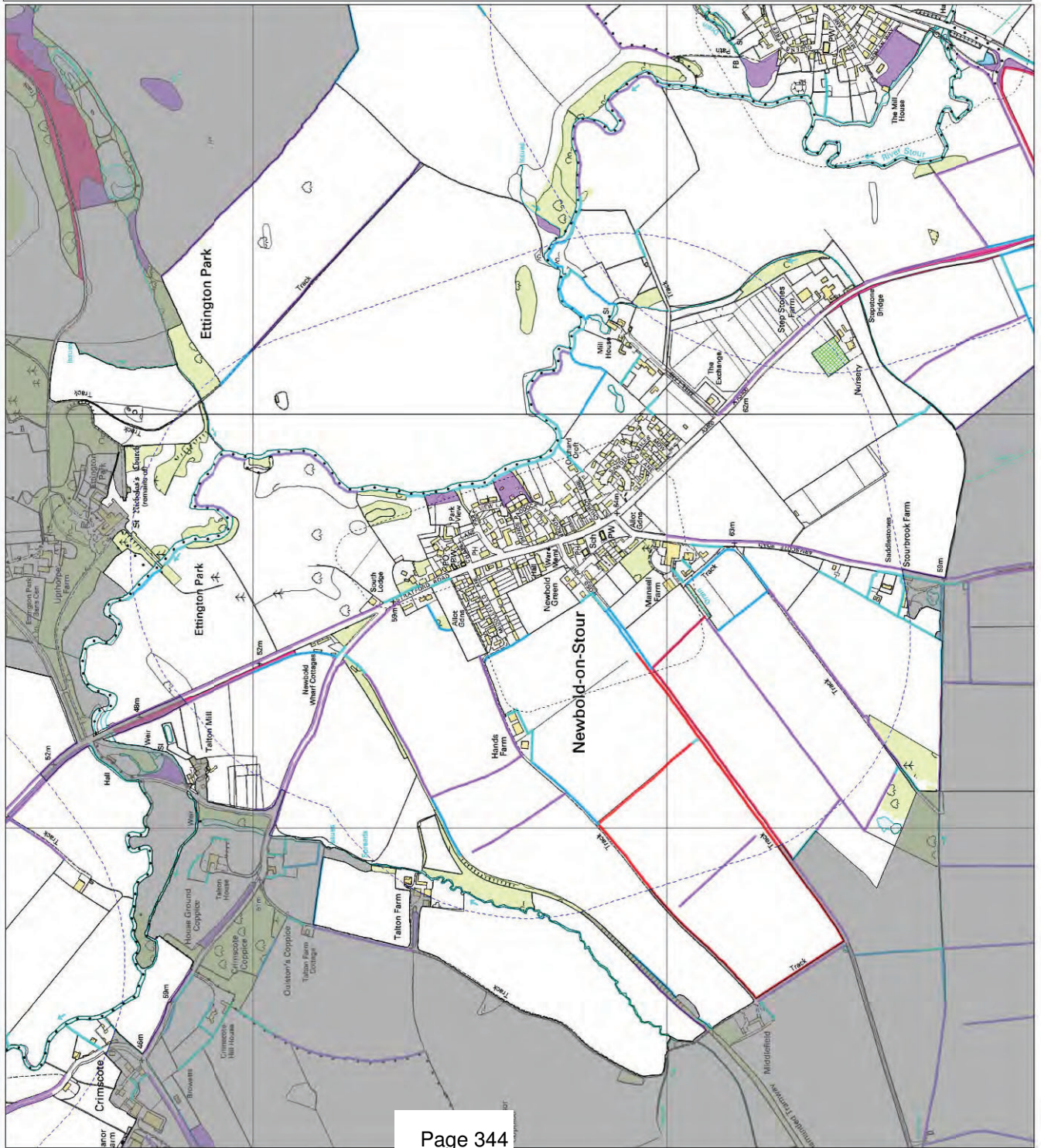


© Crown copyright, 2012. All rights reserved. Licence No. 100019520. Copyright of the data remains the property of the Habitat Biodiversity Audit for Warwickshire, Coventry and Solihull. While every effort has been made to ensure that the data is accurate in accordance with Phase 1 habitat survey standards the project cannot guarantee its accuracy or accept liability for any changes to land use or habitat that may have occurred since the survey was undertaken.



HABITAT BIODIVERSITY AUDIT  
Warwickshire Historic and Natural Environment  
Barrack Street  
Warwick  
CV34 4TH  
Tel: 01926 412 197  
Email: hba@warwickshire.gov.uk

# NEWBOLD ON STOUR



## Grassland 1km Connectivity



- High 2,000,000 to 20,000,000
- 500,000 to 2,000,000
- 100,000 to 500,000
- 50,000 to 100,000
- Low 1 to 50,000
- NO CONNECTIVITY

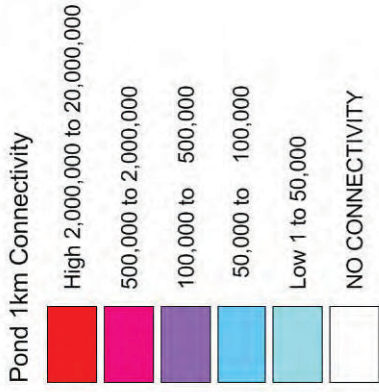
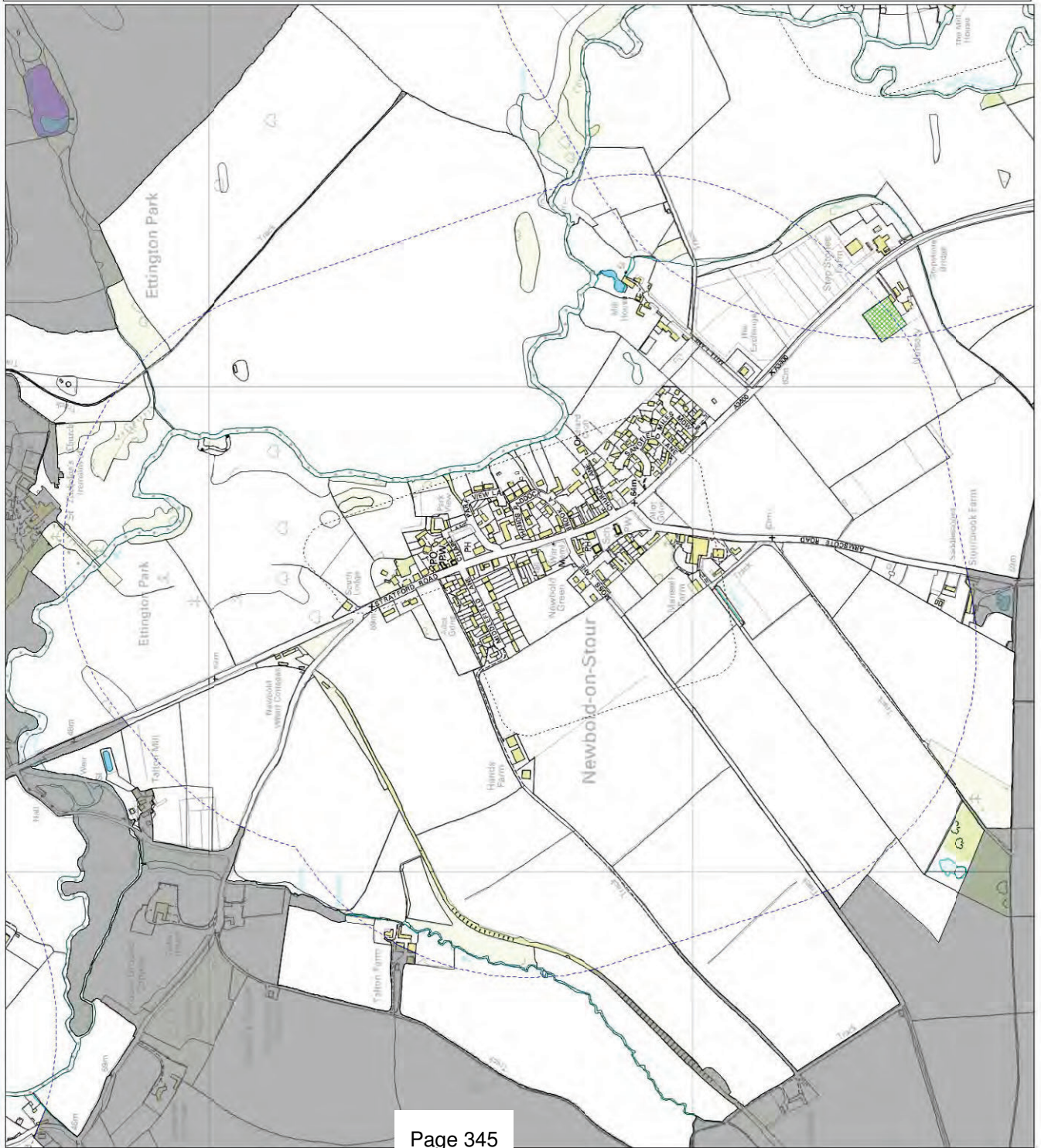


© Crown copyright, 2012. All rights reserved. Licence No. 100019520. Copyright of the data remains the property of the Habitat Biodiversity Audit for Warwickshire, Coventry and Solihull. While every effort has been made to ensure that the data is accurate in accordance with phase 1 habitat survey standards the project cannot guarantee its accuracy or accept responsibility for any changes to land use or habitat that may have occurred since the survey was undertaken.

PRINTED 02/07/2012



# NEWBOLD ON STOUR



© Crown copyright, 2012. All rights reserved. Licence No. 100019520. Copyright of the data remains the property of the Habitat Biodiversity Audit for Warwickshire, Coventry and Solihull. While every effort has been made to ensure that the data is accurate in accordance with Phase 1 habitat survey standards the project cannot guarantee its accuracy or accept responsibility for any changes to land use or habitat that may have occurred since the survey was undertaken.